



HOOGHLY RIVER BRIDGE COMMISSIONERS

(A STATUTORY ORGANISATION UNDER GOVT. OF WEST BENGAL)

HRBC BHAWAN

ST. GEORGES GATE ROAD (MUNSHI PREM CHAND SARANI)

KOLKATA-700 021

Ph. No.: 033-2253-4133; Fax No.: 033-2248-5833

Email: direc.pldn@gmail.com

No. HRBC/12C-98/2007/190313-2

Date: 19.03.2013

ADDENDUM NO.1 TO TENDER DOCUMENT

Sub: Repair and Rehabilitation of Old Kidderpore Steel Bridge over Tolly's Nullah at Kidderpore.

Ref: NIP NO. HRBC/PL. & DN./05 of 2012-2013, Dated - 27.06.2012.

In terms of Clause 9 of Vol.1, Section 2 – Instruction to Bidders, the following modifications are made to the Tender Document.

Sl. No.	Location in Tender Document	Modifications
1.	Vol.1, Section 2: Instruction to Bidders, Page 14, First sentence of Clause 15.1	The existing sentence "The bidderacceptable to the Employer." is deleted and substituted by " The bidder shall furnish, as part of his bid, a bid security of Rs 18 (Eighteen) lac at the time of submission of tender in the form of Bank Draft payable at Kolkata or Bank Guarantee in favour of "Hooghly River Bridge Commissioners" from a Nationalised or Scheduled Bank to be acceptable to the Employer. "

Also the enclosed document contains Volume III – Contract Drawings consisting of 18 nos. drawings (to be printed on A4 sheets) along with separator page of Volume III for submitting the same with the tender.

These Contract Drawings(Volume III) shall be bound with Volume I & Volume II to make a complete set of Book 1.

This letter along with enclosure may be considered as *Addendum No.1 to Tender Document* and it will be a part of the Tender Document.

All other particulars of the Tender Document will remain unaltered.

Enclo: i) Separator page of Vol.III
ii) 18 nos. Contract Drawings.

Director (Pl. & Dn.), HRBC

**REPAIR & REHABILITATION OF
OLD KIDDERPORE STEEL BRIDGE OVER
TOLLY'S NULLAH AT KIDDERPORE**

**Volume III
Contract Drawings**

(18 nos. drawings are to be printed on A4 sheets)

HOOGLY RIVER BRIDGE COMMISSIONERS

(A Statutory Organisation under Government of West Bengal)

TRANSPORT DEPARTMENT

MUNSHI PREMCHAND SARANI

(ST. GEORGE'S GATE ROAD)

KOLKATA – 700 021


MARCH – 2013

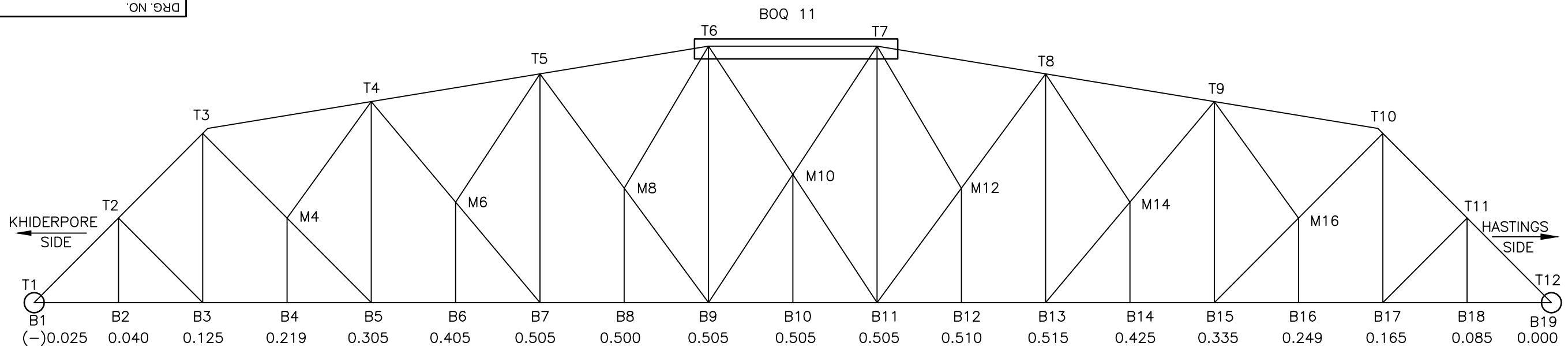
LIST OF DRAWINGS FOR PROPOSED KHIDERPORE BRIDGE

SL. No.	DRAWING NO.	REV.	TITLE
1	9404/T-01	R0	LIST OF DRAWINGS FOR PROPOSED KHIDERPORE BRIDGE
2	9404/T-07	R0	TRUSS ARRANGEMENT FOR U/S
3	9404/T-08	R0	TRUSS ARRANGEMENT FOR D/S
4	9404/T-09	R0	SUPPORTING TRUSS
5	9404/T-10	R0	PILE FOUNDATION SUPPORTING COLUMN
6	9404/T-11	R0	CROSS SECTION
7	9404/T-12	R0	GUARD PLATES AT BOTTOM CHORD
8	9404/T-13	R0	VIEW AT BEARING LOCATION
9	9404/T-17	R0	VIEW AT BEARING LOCATION

SL. No.	DRAWING NO.	REV.	TITLE
10	9404/T-23	R0	VIEW AT BEARING LOCATION
11	9404/T-26	R0	VIEW AT BEARING LOCATION
12	9404/T-31	R0	BEARING PLATE
13	9404/T-33	R0	CROSS GIRDER SUPPORT
14	9404/T-37	R0	CROSS GIRDER SECTION
15	9404/T-34	R0	BEARING POINT
16	9404/T-47	R0	BRIDGE SECTION
-	-	-	-
17	9404/T-52	R0	BRACING
18	9404/T-62	R0	TOP BRACING

FOR TENDER PURPOSE ONLY

DATE	No.	REVISION	DRAWN	CHECKED	APPROVED
 STUP Consultants P. Ltd. <small>REGISTERED OFFICE : 1004-5 RAHEJA CHAMBERS, NARIMAN POINT, BOMBAY 400 021.</small>			OFFICE OF ORIGIN KOLKATA		
OWNER CLIENT HOOGHLY RIVER BRIDGE COMMISSIONERS			DATE 08.05.2012		
CONTRACTOR CLIENT _____			DRAWN SK.M.		
PROJECT REHABILITATION OF OLD KHIDERPORE BRIDGE OVER TOLLY NALLAH IN KOLKATA			CHECKED S.RAY		
TITLE DRAWING LIST			APPROVED A.D.		
DRG.NO.: 9404/T-01		REV. 0	SCALE		
THIS DRAWING IS THE PROPERTY OF STUP CONSULTANTS P. LIMITED. IT SHOULD NOT BE USED, COPIED OR REPRODUCED WITHOUT THEIR WRITTEN PERMISSION.					



BOQ 20
BOQ 18
BOQ 17
BOQ 24
BOQ 32

18 PANELS
237' C/C OF BEARING

BOQ 20
BOQ 18
BOQ 17
BOQ 24
BOQ 32

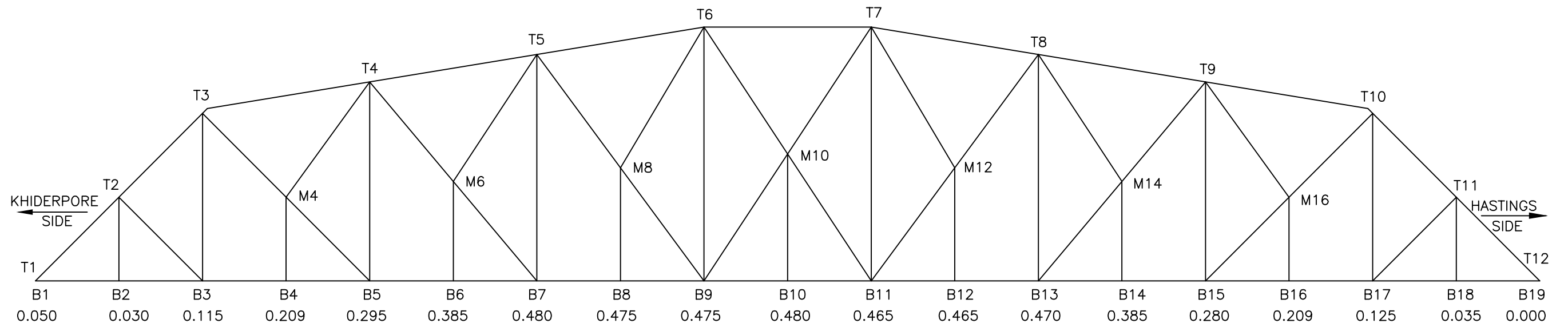
CAMBER OF U/S TRUSS GIRDERS AT RESPECTIVE PANEL POINTS

(CONSIDERING B19 NODE POINT AS 0.000)
(SCALE 1:200)

- BOQ 23 OVER WHOLE BOTTOM CHORD LENGTH
- BOQ 16 AT EACH VERTICAL BOTTOM
- BOQ 28 HAND RAILS IN EXISTING & DEMOLISHED PANELS
- BOQ 13 OVER BOTTOM STRINGER / BRACING
- BOQ 26 HANGER BELOW STRINGERS
- BOQ 30 OVER TOP CHORD JOINTS
- BOQ 34 COMPLETE BRIDGE SUPERSTRUCTURE
- BOQ 35 AT BRICK MASSONRY

FOR TENDER PURPOSE ONLY

DATE	No.	REVISION	DRAWN	CHECKED	APPROVED
REGISTERED OFFICE : 1004-5 RAHEJA CHAMBERS, NARIMAN POINT, BOMBAY 400 021.			OFFICE OF ORIGIN KOLKATA		
OWNER CLIENT HOOGHLY RIVER BRIDGE COMMISSIONERS			DATE 08.05.2012		
CONTRACTOR CLIENT			DRAWN SK.M.		
PROJECT REHABILITATION OF OLD KHIDDERPORE BRIDGE OVER TOLLY NALLAH IN KOLKATA			CHECKED S.RAY		
TITLE TRUSS ARRANGEMENT FOR UP STREAM			APPROVED A.D.		
DRG.NO.: 9404/T-07		REV. 0	SCALE 1:200		
THIS DRAWING IS THE PROPERTY OF STUP CONSULTANTS P. LIMITED. IT SHOULD NOT BE USED, COPIED OR REPRODUCED WITHOUT THEIR WRITTEN PERMISSION.					



18 PANNELS
237' C/C OF BEARING

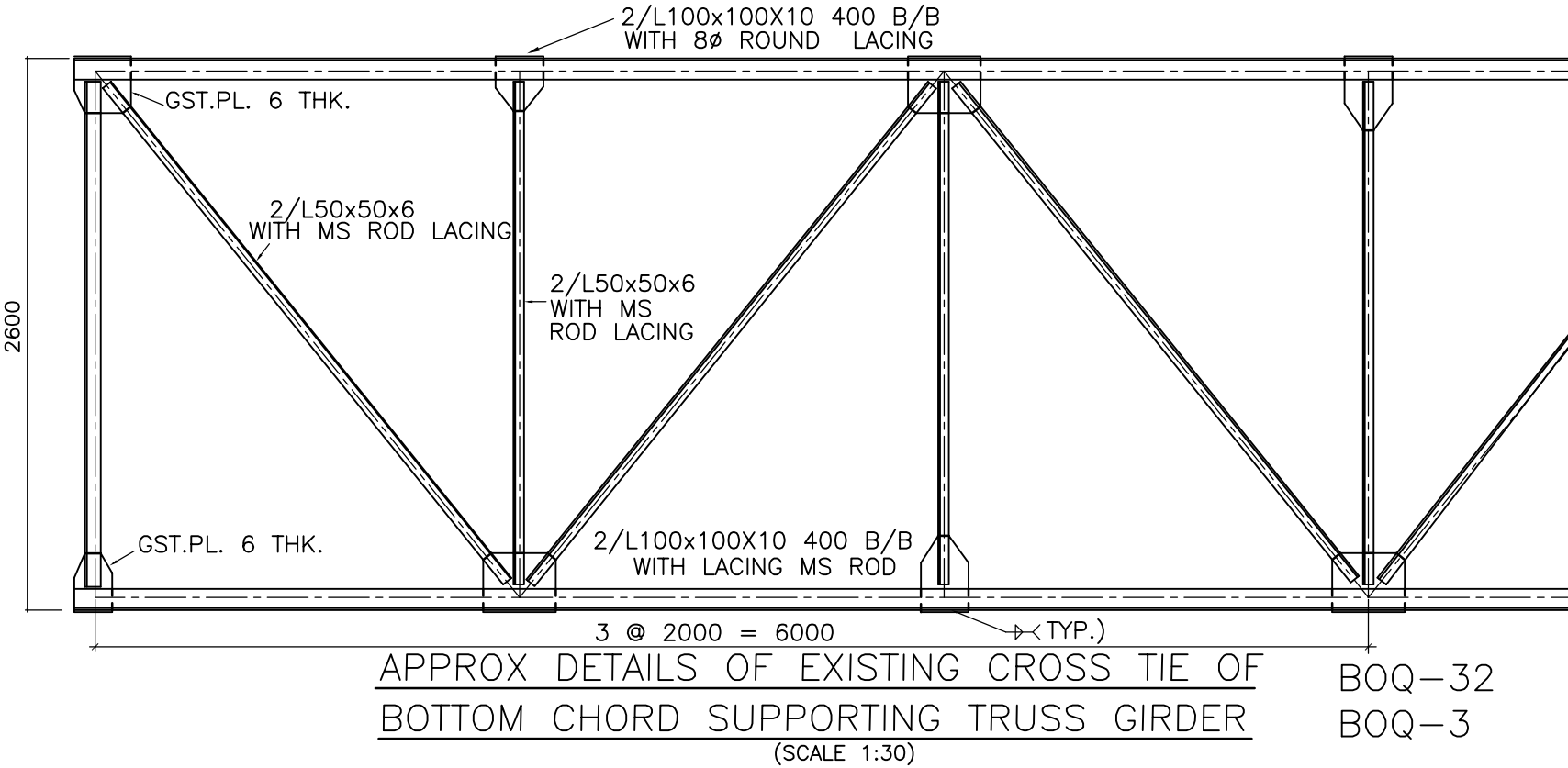
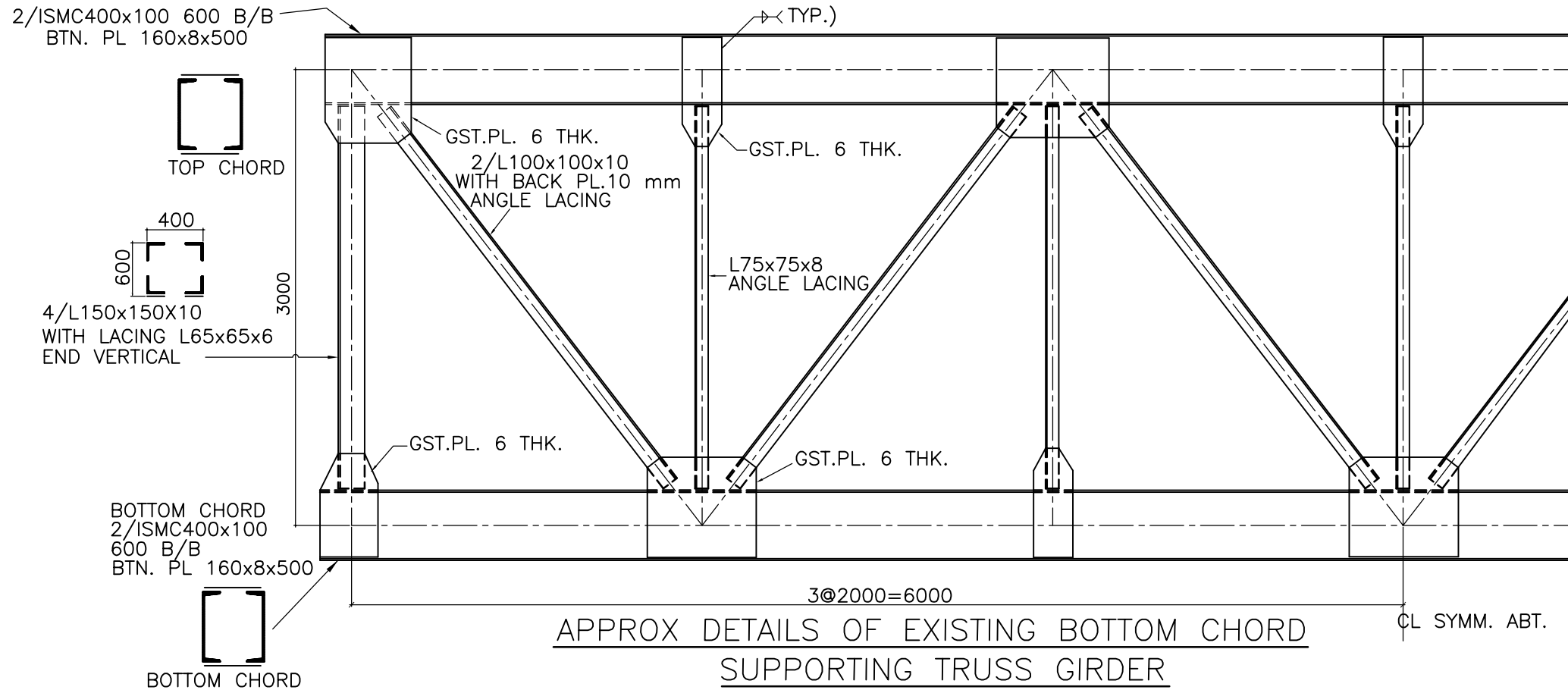
CAMBER OF D/S TRUSS GIRDER AT RESPECTIVE PANEL POINTS

(CONSIDERING B19 NODE POINT AS 0.000)
(SCALE 1:200)

NOTE: CROSS LEVEL BETWEEN U/S & D/S TRUSS
AT D/S B19 NODE POINT IS (+) 0.025 ie 25 mm W.R.T.
U/S B19 NODE POINT.

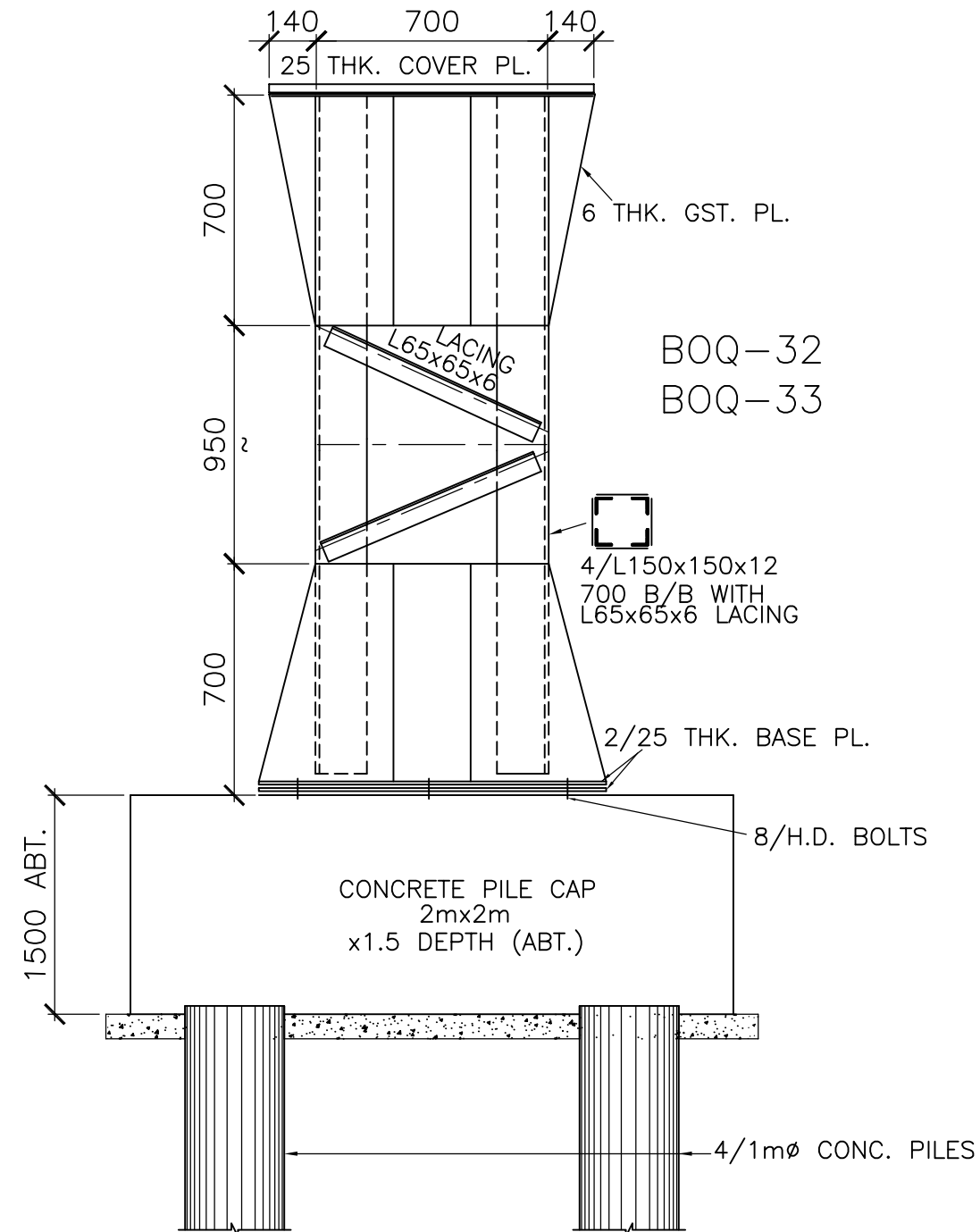
FOR TENDER PURPOSE ONLY

DATE	No.	REVISION	DRAWN	CHECKED	APPROVED
REGISTERED OFFICE : 1004-5 RAHEJA CHAMBERS, NARIMAN POINT, BOMBAY 400 021.			OFFICE OF ORIGIN KOLKATA		
OWNER CLIENT HOOGLY RIVER BRIDGE COMMISSIONERS				DATE 08.05.2012	
CONTRACTOR CLIENT				DRAWN SK.M.	
PROJECT REHABILITATION OF OLD KHIDDERPORE BRIDGE OVER TOLLY NALLAH IN KOLKATA				CHECKED S.RAY	
TITLE REPAIR AND REHABILITATION PLAN				APPROVED A.D.	
DRG.NO.: 9404/T-08			REV. 0	SCALE 1:200	
THIS DRAWING IS THE PROPERTY OF STUP CONSULTANTS P. LIMITED. IT SHOULD NOT BE USED, COPIED OR REPRODUCED WITHOUT THEIR WRITTEN PERMISSION.					



FOR TENDER PURPOSE ONLY

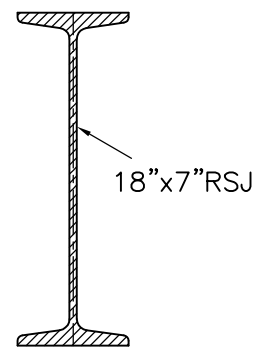
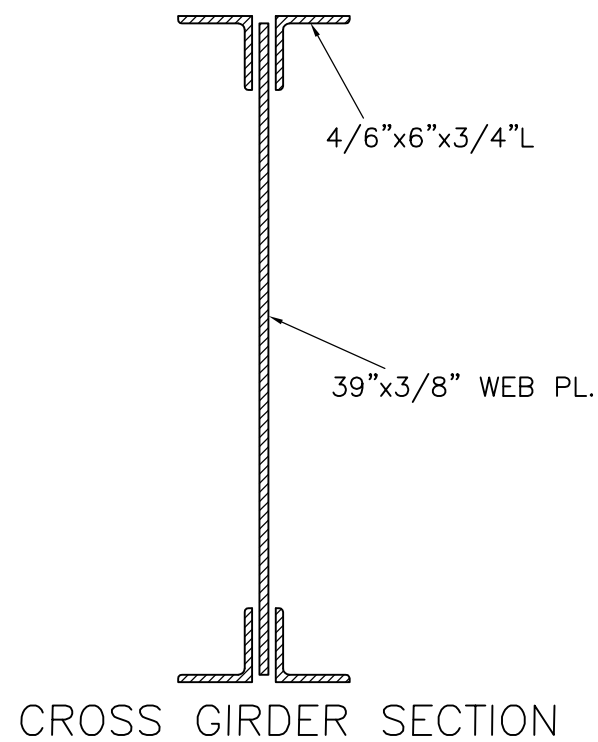
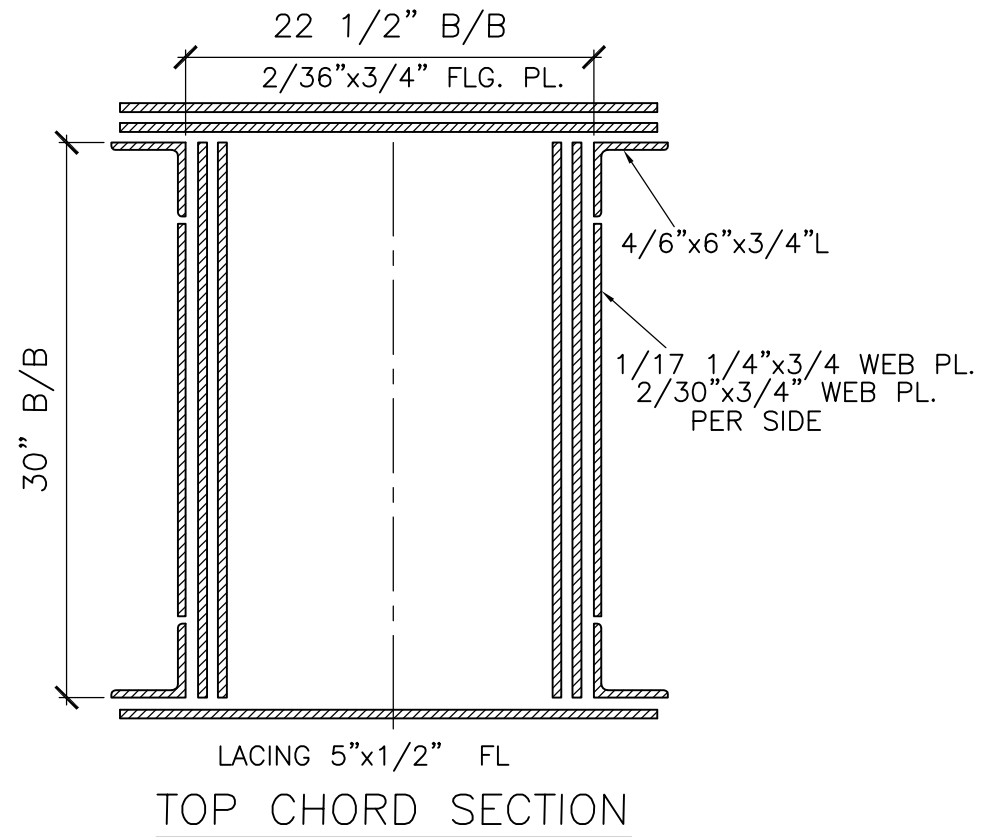
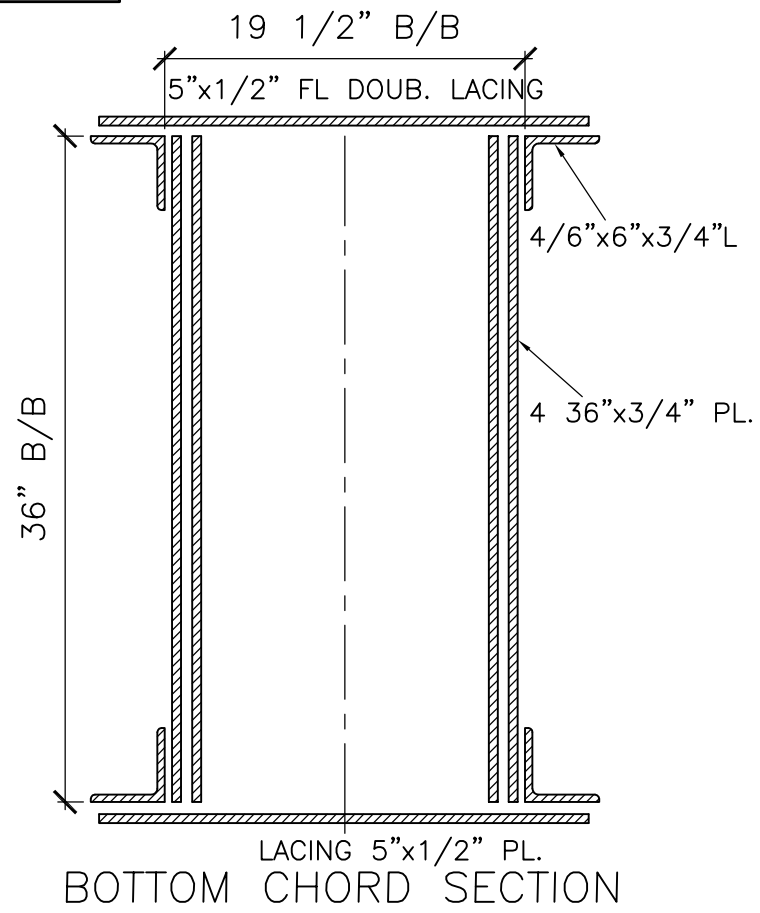
DATE	No.	REVISION	DRAWN	CHECKED	APPROVED
REGISTERED OFFICE : STUP Consultants P. Ltd. 1004-5 RAHEJA CHAMBERS, NARIMAN POINT, BOMBAY 400 021.			OFFICE OF ORIGIN		KOLKATA
OWNER CLIENT			HOOGHLY RIVER BRIDGE COMMISSIONERS		DATE 08.05.2012
CONTRACTOR CLIENT					DRAWN SK.M.
PROJECT			REHABILITATION OF OLD KHIDDERPORE BRIDGE OVER TOLLY NALLAH IN KOLKATA		CHECKED S.RAY
TITLE			SUPPORTING TRUSS		APPROVED A.D.
DRG.NO.: 9404/T-09			REV. 0		SCALE 1:30
THIS DRAWING IS THE PROPERTY OF STUP CONSULTANTS P. LIMITED. IT SHOULD NOT BE USED, COPIED OR REPRODUCED WITHOUT THEIR WRITTEN PERMISSION.					



APPROX DETAILS OF EXISTING SUPPORTS OVER PILE CAP BELOW
BOTTOM CHORD JOINTS OF BRIDGE TRUSS
(SCALE 1:20)

FOR TENDER PURPOSE ONLY

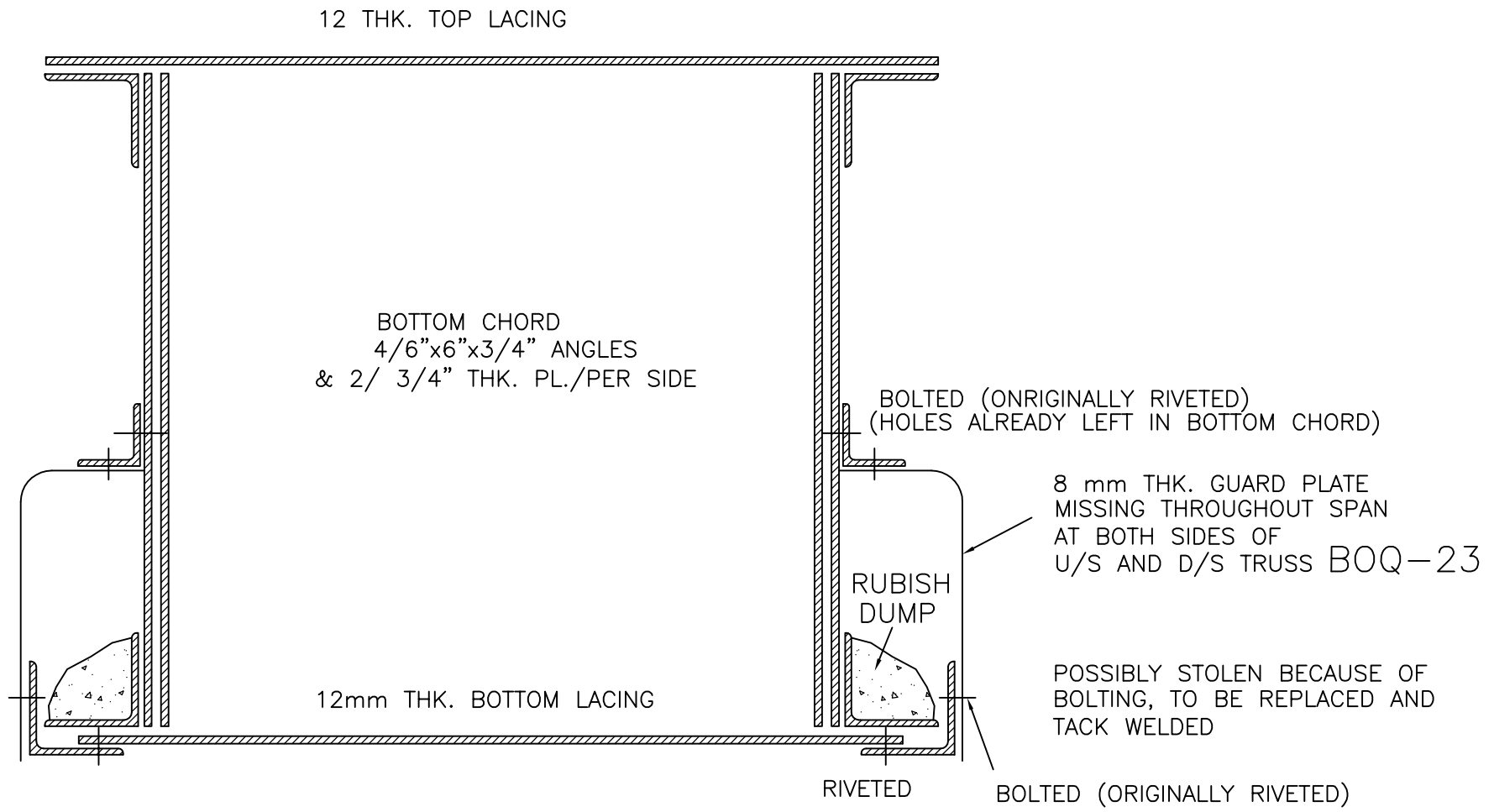
DATE	No.	REVISION	DRAWN	CHECKED	APPROVED
REGISTERED OFFICE : STUP Consultants P. Ltd. 1004-5 RAHEJA CHAMBERS, NARIMAN POINT, BOMBAY 400 021.			OFFICE OF ORIGIN		KOLKATA
OWNER CLIENT				DATE	
HOOGHLY RIVER BRIDGE COMMISSIONERS				08.05.2012	
CONTRACTOR CLIENT				DRAWN	
				SK.M.	
PROJECT				CHECKED	
REHABILITATION OF OLD KHIDDERPORE BRIDGE OVER TOLLY NALLAH IN KOLKATA				S.RAY	
TITLE				APPROVED	
PILE FOUNDATION SUPPORTING COLUMN				A.D.	
DRG.NO.: 9404/T-10			REV.	SCALE	
			0	1:20	
THIS DRAWING IS THE PROPERTY OF STUP CONSULTANTS P. LIMITED. IT SHOULD NOT BE USED, COPIED OR REPRODUCED WITHOUT THEIR WRITTEN PERMISSION.					



GENERAL CROSS SECTION OF TOP CHORD, BOTTOM CHORD
CROSS GIRDER AND STRINGER
(SCALE 1:10)

FOR TENDER PURPOSE ONLY

DATE	No.	REVISION	DRAWN	CHECKED	APPROVED
REGISTERED OFFICE : STUP Consultants P. Ltd. 1004-5 RAHEJA CHAMBERS, NARIMAN POINT, BOMBAY 400 021.			OFFICE OF ORIGIN		KOLKATA
OWNER CLIENT			HOOGHLY RIVER BRIDGE COMMISSIONERS		DATE 08.05.2012
CONTRACTOR CLIENT			_____		DRAWN SK.M.
PROJECT			REHABILITATION OF OLD KHIDDERPORE BRIDGE OVER TOLLY NALLAH IN KOLKATA		CHECKED S.RAY
TITLE			CROSS SECTION		APPROVED A.D.
DRG.NO.: 9404/T-11		REV. 0	SCALE 1:10		
THIS DRAWING IS THE PROPERTY OF STUP CONSULTANTS P. LIMITED. IT SHOULD NOT BE USED, COPIED OR REPRODUCED WITHOUT THEIR WRITTEN PERMISSION.					

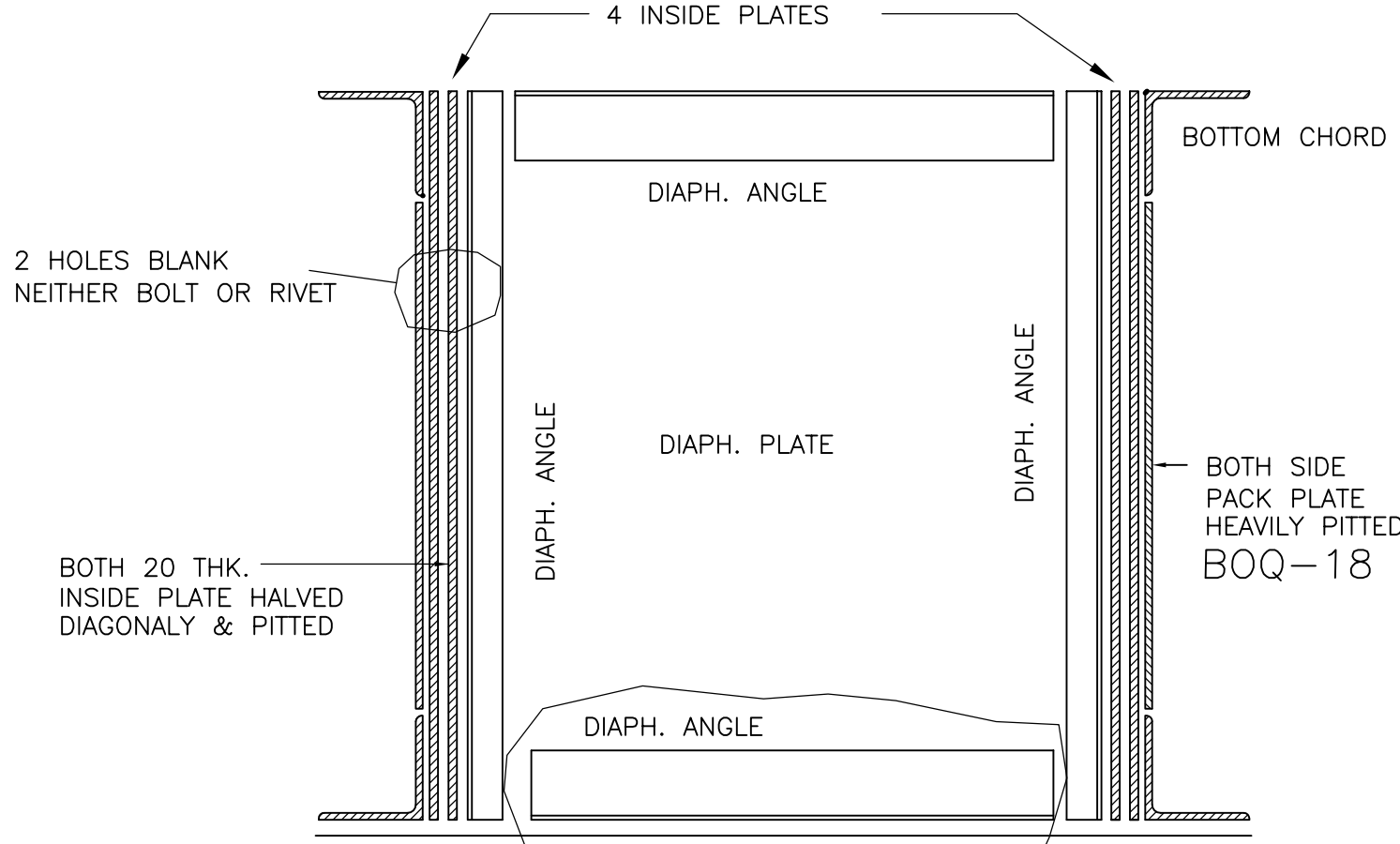


VITAL REMEDIAL MEASURES TO PREVENT UNWANTED DUMPS AT BOTTOM CHORD

(SCALE 1:10)

FOR TENDER PURPOSE ONLY

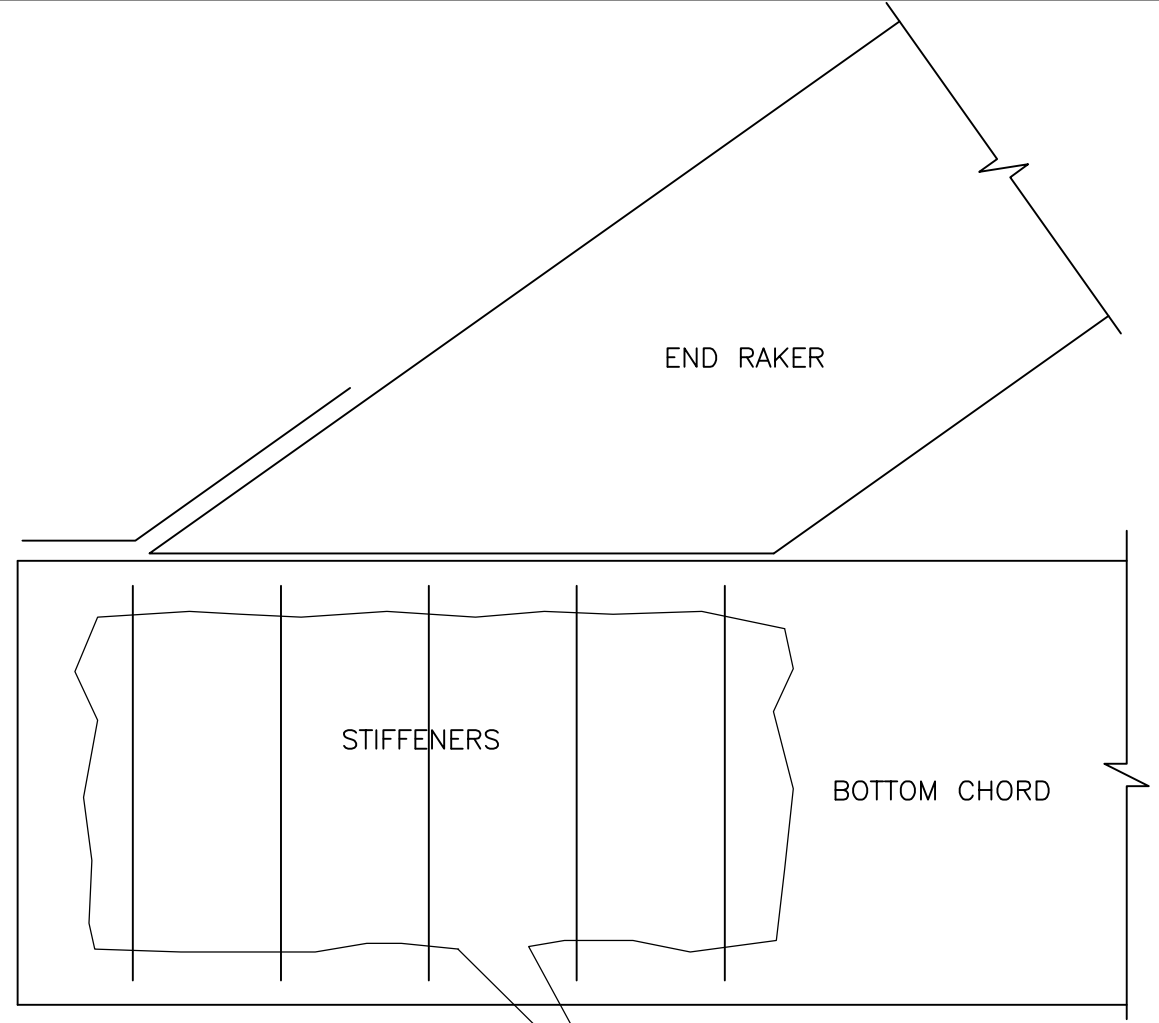
DATE	No.	REVISION	DRAWN	CHECKED	APPROVED
REGISTERED OFFICE : 1004-5 RAHEJA CHAMBERS, NARIMAN POINT, BOMBAY 400 021.			OFFICE OF ORIGIN		KOLKATA
OWNER CLIENT HOOGHLY RIVER BRIDGE COMMISSIONERS				DATE	08.05.2012
CONTRACTOR CLIENT				DRAWN	SK.M.
PROJECT REHABILITATION OF OLD KHIDDERPORE BRIDGE OVER TOLLY NALLAH IN KOLKATA				CHECKED	S.RAY
TITLE GUARD PLATES AT BOTTOM CHORD				APPROVED	A.D.
DRG.NO.: 9404/T-12		REV. 0	SCALE 1:10		
THIS DRAWING IS THE PROPERTY OF STUP CONSULTANTS P. LIMITED. IT SHOULD NOT BE USED, COPIED OR REPRODUCED WITHOUT THEIR WRITTEN PERMISSION.					



BOTTOM PLATE/DIAPH. ANGLE (BOTTOM) AND INSIDE VERTICAL PLATE AT BOTTOM SEVERELY CORRODED AND NEED REPLACEMENT INCLUDING 16 RIVETS/BOLTS BOQ-20

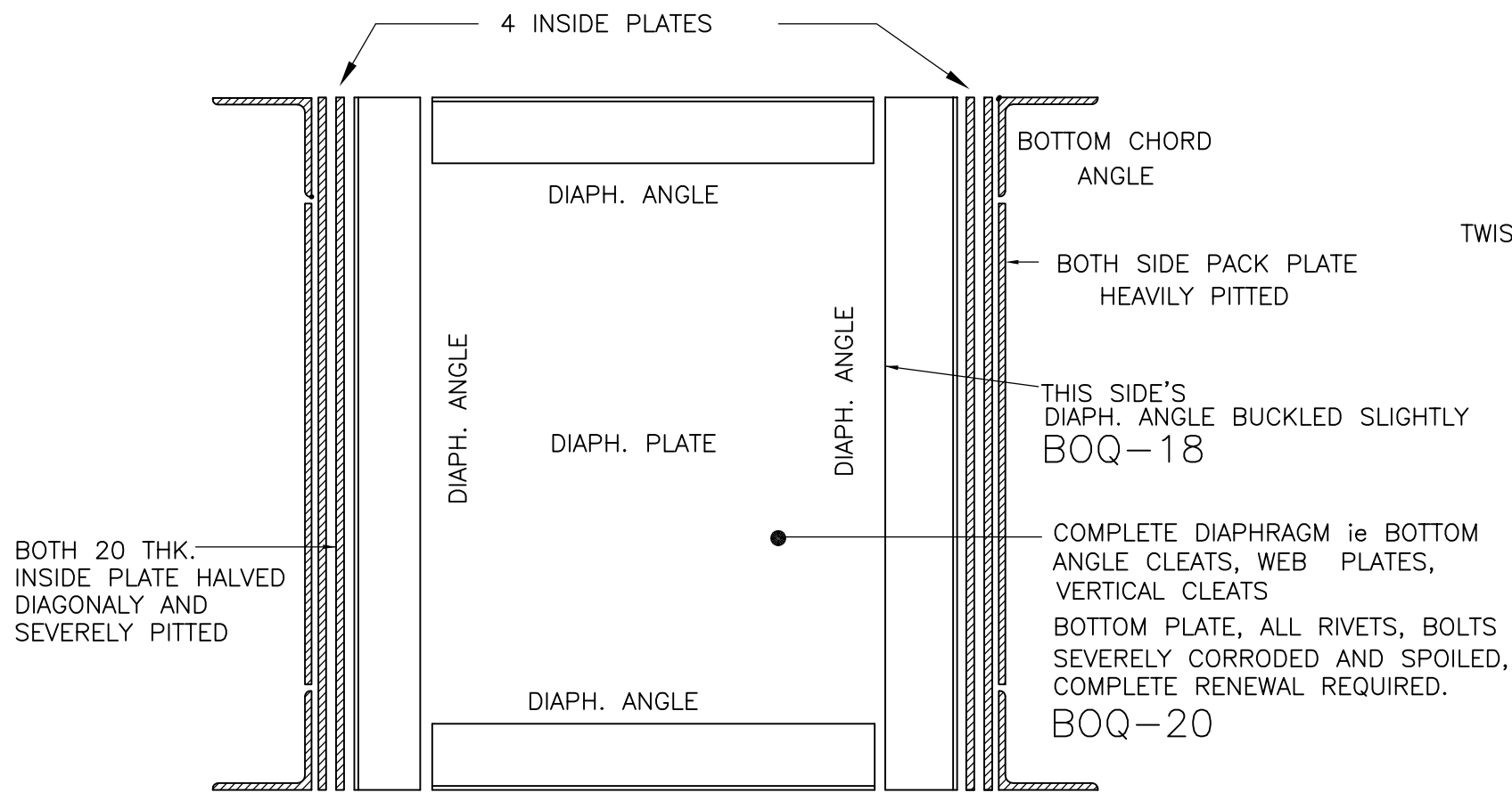
SECTION OF BOTTOM CHORD AT B1 U/S AT KHIDERPORE SIDE (OVER BEARING LOCATION)
(SCALE 1:10)

FOR TENDER PURPOSE ONLY

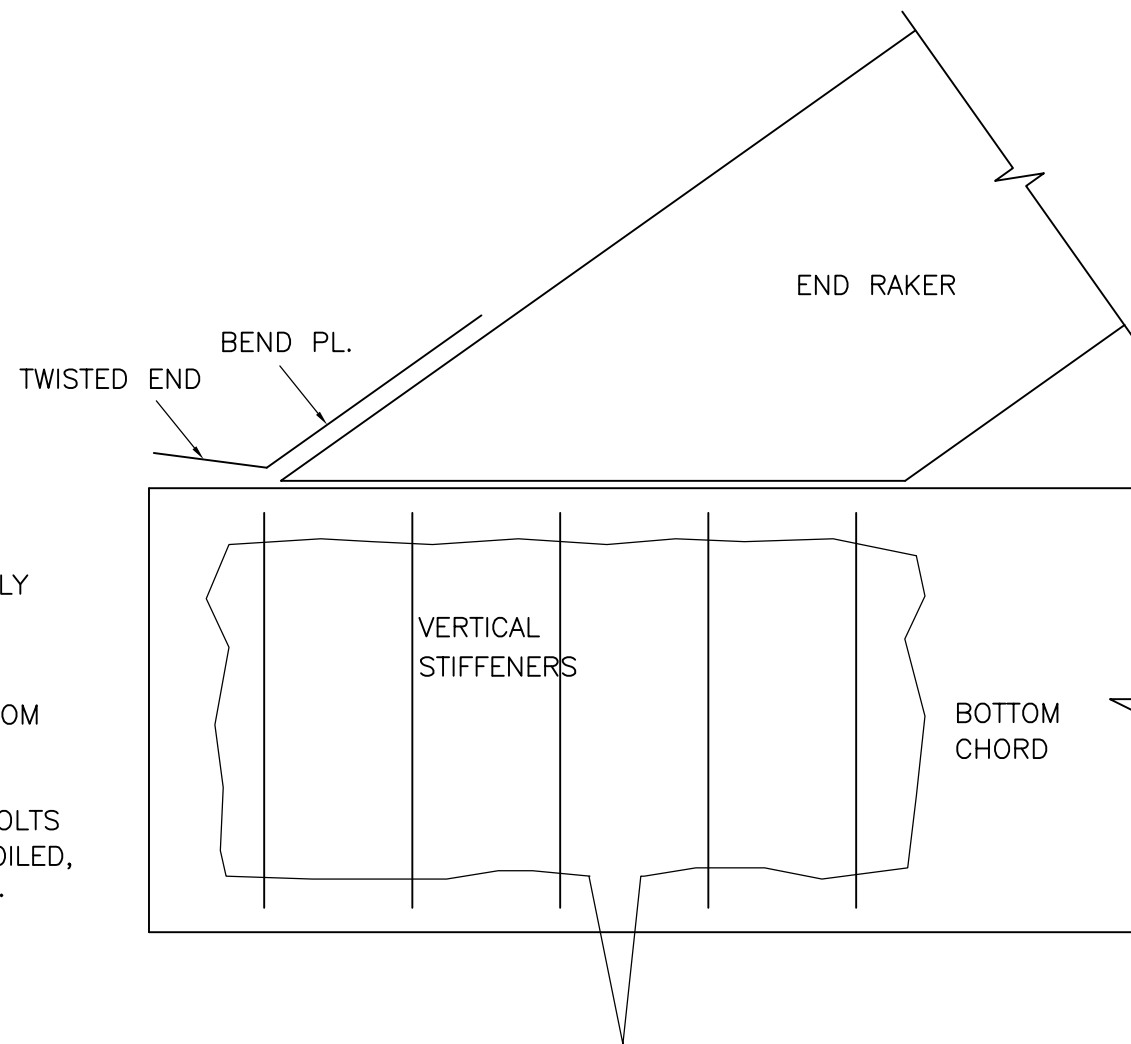


ABOUT 35 NOS BOLTS IN JOINT INSTEAD OF RIVETS. 20 BOLTS/RIVETS CORRODED & SPOILED, TO BE REPLACED BOQ-17

DATE	No.	REVISION	DRAWN	CHECKED	APPROVED
REGISTERED OFFICE : STUP Consultants P. Ltd. 1004-5 RAHEJA CHAMBERS, NARIMAN POINT, BOMBAY 400 021.			OFFICE OF ORIGIN		KOLKATA
OWNER CLIENT				DATE	
HOOGHLY RIVER BRIDGE COMMISSIONERS				08.05.2012	
CONTRACTOR CLIENT				DRAWN	
				SK.M.	
PROJECT				CHECKED	
REHABILITATION OF OLD KHIDERPORE BRIDGE OVER TOLLY NALLAH IN KOLKATA				S.RAY	
TITLE				APPROVED	
VIEW AT BEARING LOCATION				A.D.	
DRG.NO.: 9404/T-13			REV.	SCALE	
			0	1:10	
THIS DRAWING IS THE PROPERTY OF STUP CONSULTANTS P. LIMITED. IT SHOULD NOT BE USED, COPIED OR REPRODUCED WITHOUT THEIR WRITTEN PERMISSION.					



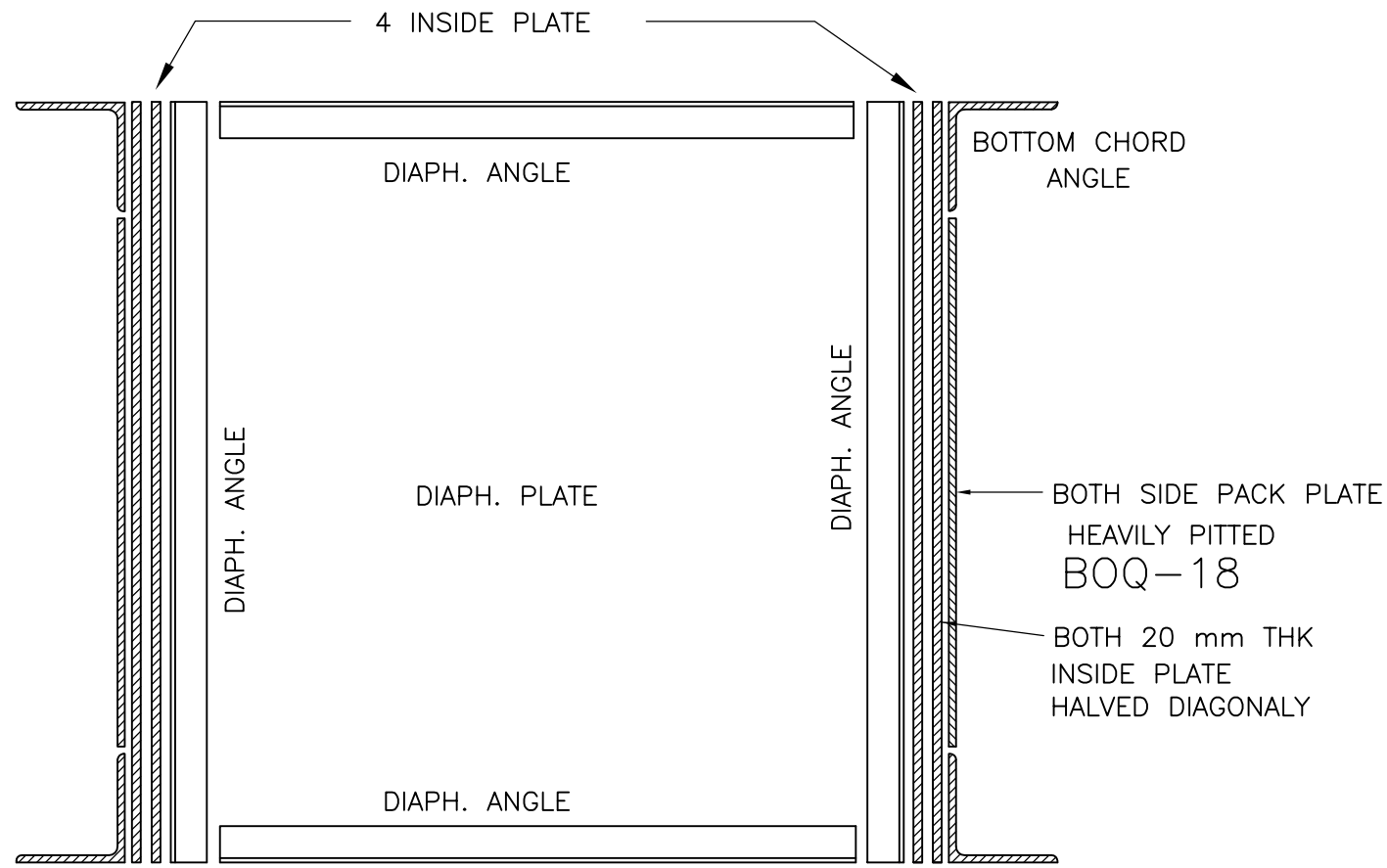
SECTION OF BOTTOM CHORD AT B1 D/S
 AT KHIDDERPORE SIDE (OVER BEARING LOCATION)
 (SCALE 1:10)



30 NOS BOLTS IN JOINT INSTEAD OF RIVETS.
 50 RIVETS/BOLTS CORRODED & SPOILED ,
 TO BE RENEWED BOQ-17

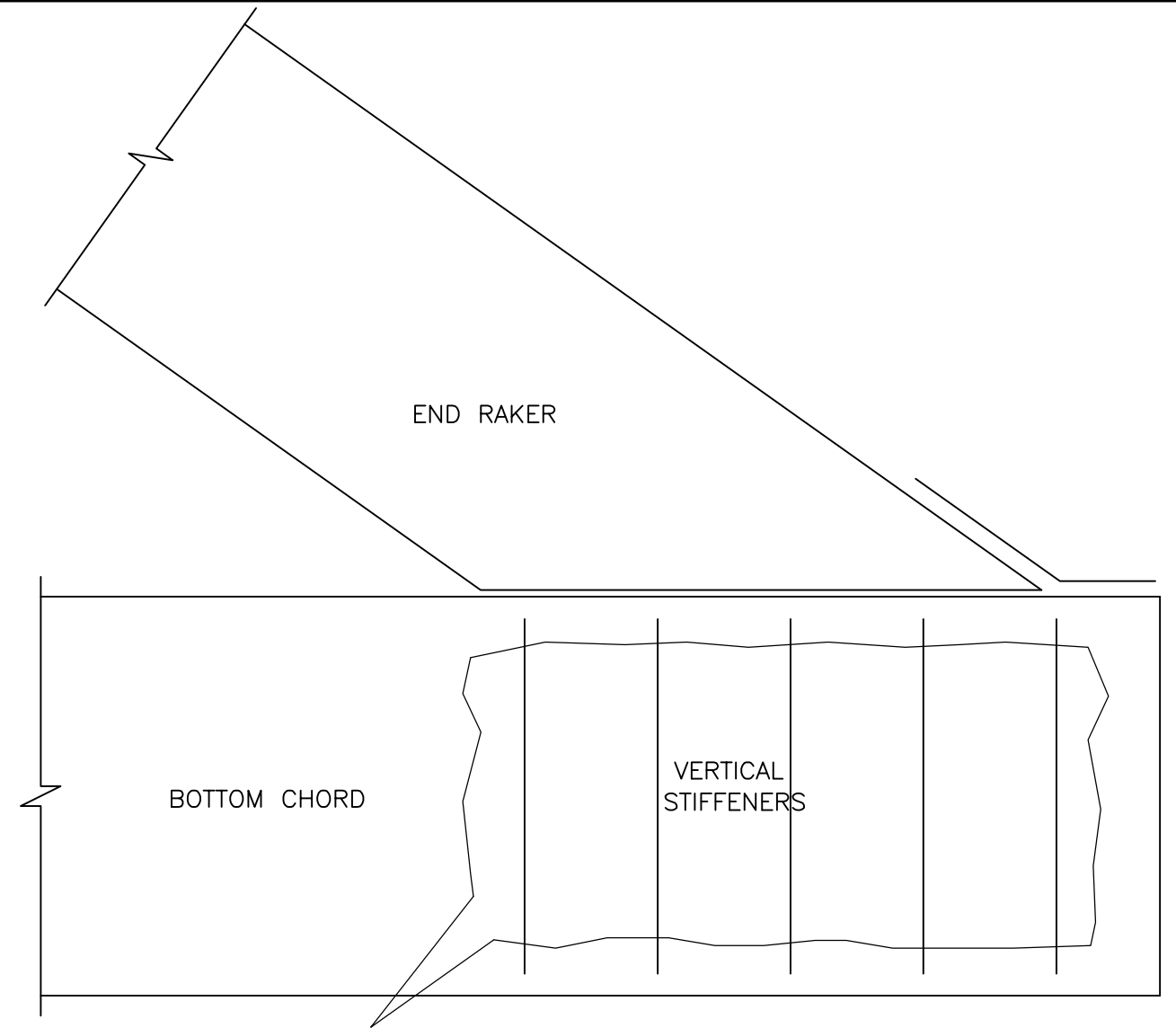
FOR TENDER PURPOSE ONLY

DATE	No.	REVISION	DRAWN	CHECKED	APPROVED
REGISTERED OFFICE : STUP Consultants P. Ltd. 1004-5 RAHEJA CHAMBERS, NARIMAN POINT, BOMBAY 400 021.			OFFICE OF ORIGIN		KOLKATA
OWNER CLIENT			HOOGHLY RIVER BRIDGE COMMISSIONERS		DATE 08.05.2012
CONTRACTOR CLIENT			_____		DRAWN SK.M.
PROJECT			REHABILITATION OF OLD KHIDDERPORE BRIDGE OVER TOLLY NALLAH IN KOLKATA		CHECKED S.RAY
TITLE			VIEW AT BEARING LOCATION		APPROVED A.D.
DRG.NO.: 9404/T-17			REV. 0		SCALE 1:10
THIS DRAWING IS THE PROPERTY OF STUP CONSULTANTS P. LIMITED. IT SHOULD NOT BE USED, COPIED OR REPRODUCED WITHOUT THEIR WRITTEN PERMISSION.					



SECTION OF BOTTOM CHORD AT B19 U/S AT HASTINGS SIDE (OVER BEARING LOCATION)

(SCALE 1:10)

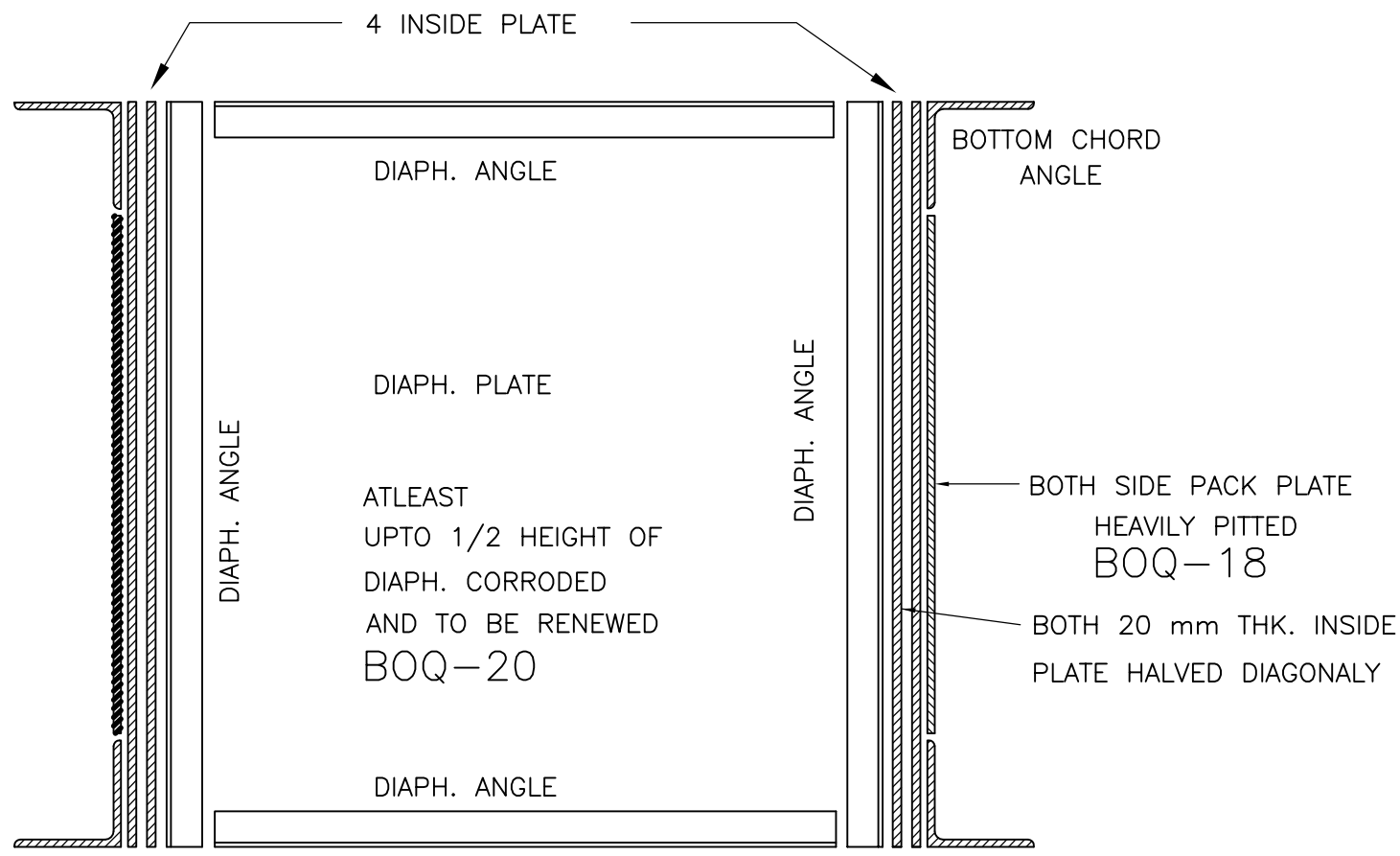


60 NOS BOLTS INSTEAD OF RIVETS
52 RIVETS/BOLTS CORRODED/SPOILED
TO BE REPLACED BOQ-17

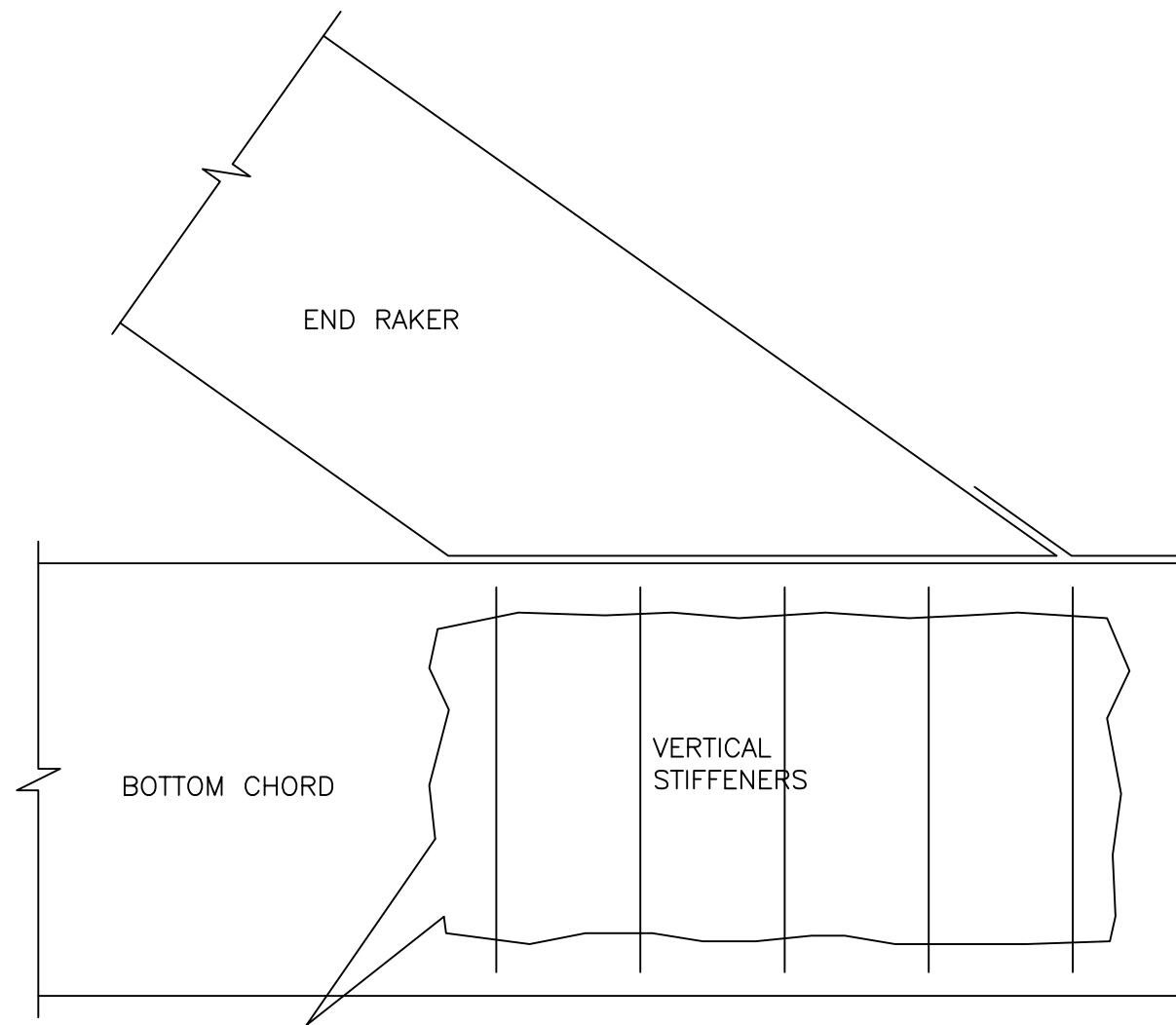
(SCALE 1:10)

FOR TENDER PURPOSE ONLY

DATE	No.	REVISION	DRAWN	CHECKED	APPROVED
REGISTERED OFFICE : STUP Consultants P. Ltd. 1004-5 RAHEJA CHAMBERS, NARIMAN POINT, BOMBAY 400 021.			OFFICE OF ORIGIN		KOLKATA
OWNER CLIENT				DATE	
HOOGHLY RIVER BRIDGE COMMISSIONERS				08.05.2012	
CONTRACTOR CLIENT				DRAWN	
				SK.M.	
PROJECT				CHECKED	
REHABILITATION OF OLD KHIDDERPORE BRIDGE OVER TOLLY NALLAH IN KOLKATA				S.RAY	
TITLE				APPROVED	
VIEW AT BEARING LOCATION				A.D.	
DRG.NO.: 9404/T-23			REV.	SCALE	
			0	1:10	
THIS DRAWING IS THE PROPERTY OF STUP CONSULTANTS P. LIMITED. IT SHOULD NOT BE USED, COPIED OR REPRODUCED WITHOUT THEIR WRITTEN PERMISSION.					



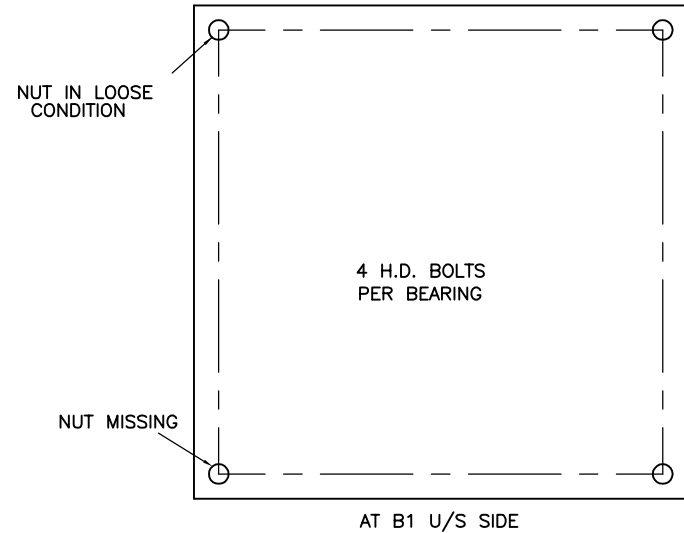
SECTION OF BOTTOM CHORD AT B19 D/S
AT HASTINGS SIDE (OVER BEARING)
(SCALE 1:10)



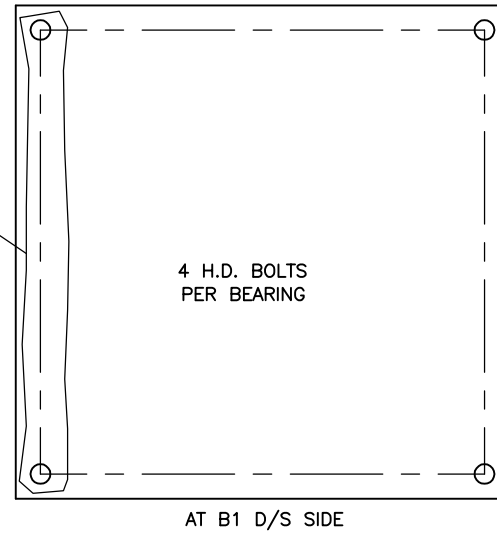
71 NOS BOLTS INSTEAD OF RIVETS
31 RIVETS/BOLTS CORRODED/SPOILED
AND TO BE RENEWED BOQ-17

FOR TENDER PURPOSE ONLY

DATE	No.	REVISION	DRAWN	CHECKED	APPROVED
REGISTERED OFFICE : STUP Consultants P. Ltd. 1004-5 RAHEJA CHAMBERS, NARIMAN POINT, BOMBAY 400 021.			OFFICE OF ORIGIN		KOLKATA
OWNER CLIENT				DATE	
HOOGHLY RIVER BRIDGE COMMISSIONERS				08.05.2012	
CONTRACTOR CLIENT				DRAWN	
				SK.M.	
PROJECT				CHECKED	
REHABILITATION OF OLD KHIDDERPORE BRIDGE OVER TOLLY NALLAH IN KOLKATA				S.RAY	
TITLE				APPROVED	
VIEW AT BEARING LOCATION				A.D.	
DRG.NO.: 9404/T-26			REV.	SCALE	
			0	1:10	
THIS DRAWING IS THE PROPERTY OF STUP CONSULTANTS P. LIMITED. IT SHOULD NOT BE USED, COPIED OR REPRODUCED WITHOUT THEIR WRITTEN PERMISSION.					

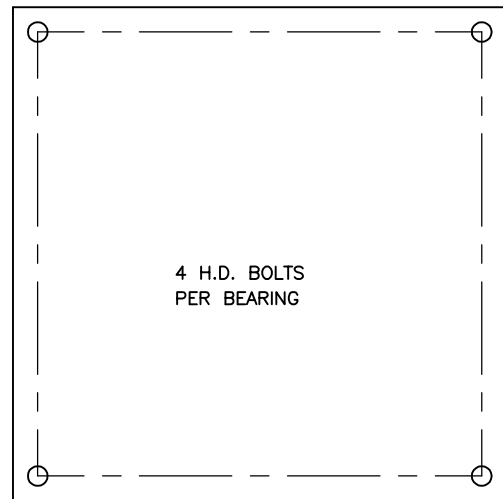


AT B1 U/S SIDE

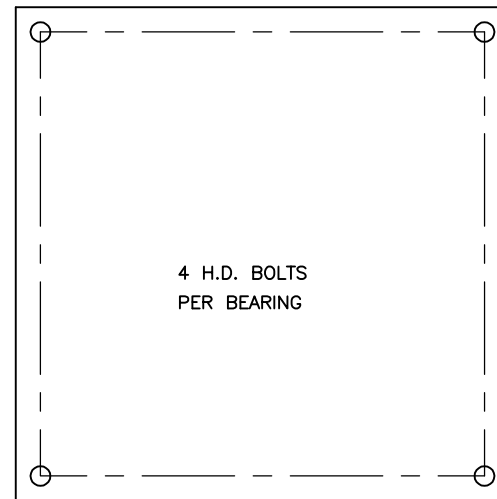


AT B1 D/S SIDE

LOWER BEARING PLATE OVER CONCRETE SUPPORT BASE
(AT KHEDDERPORE END)



AT B19 U/S SIDE



AT B19 D/S SIDE

LOWER BEARING PLATE OVER CONCRETE SUPPORT BASE
(AT HASTINGS END)
(SCALE 1:15)

NOTE:

1. ALL NUTS OF H.D. BOLTS CORRODED, BETTER TO REPLACE (TOTAL 16 NOS) **BOQ-21**
2. MANY PACKING PLATES BELOW BEARING PLATE PROTUDED, OUTWARD, TO CLEAN CUT AND EPOXY CONCRETE FILLING IN GAPS IS RATHER ESSENTIAL FOR PROPER LOAD BEARING. **BOQ-22**

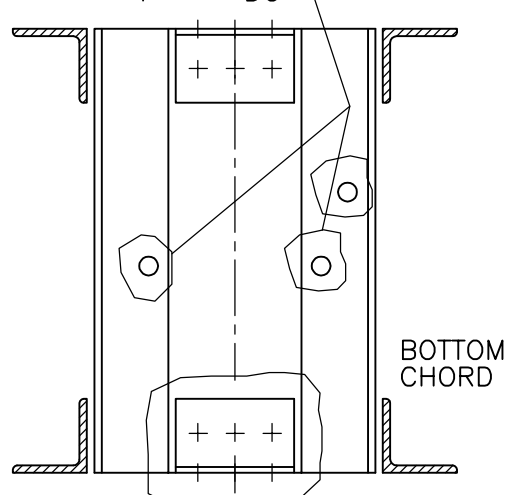
FOR TENDER PURPOSE ONLY

DATE	No.	REVISION	DRAWN	CHECKED	APPROVED
REGISTERED OFFICE : 1004-5 RAHEJA CHAMBERS, NARIMAN POINT, BOMBAY 400 021.			OFFICE OF ORIGIN		KOLKATA
OWNER CLIENT			DATE		08.05.2012
HOOGHLY RIVER BRIDGE COMMISSIONERS			DRAWN		SK.M.
CONTRACTOR CLIENT			CHECKED		S.RAY
PROJECT			APPROVED		A.D.
REHABILITATION OF OLD KHIDDERPORE BRIDGE OVER TOLLY NALLAH IN KOLKATA			TITLE		BEARING PLATE
DRG.NO.: 9404/T-31			REV.		0
			SCALE		1:15
THIS DRAWING IS THE PROPERTY OF STUP CONSULTANTS P. LIMITED. IT SHOULD NOT BE USED, COPIED OR REPRODUCED WITHOUT THEIR WRITTEN PERMISSION.					

BOQ-19

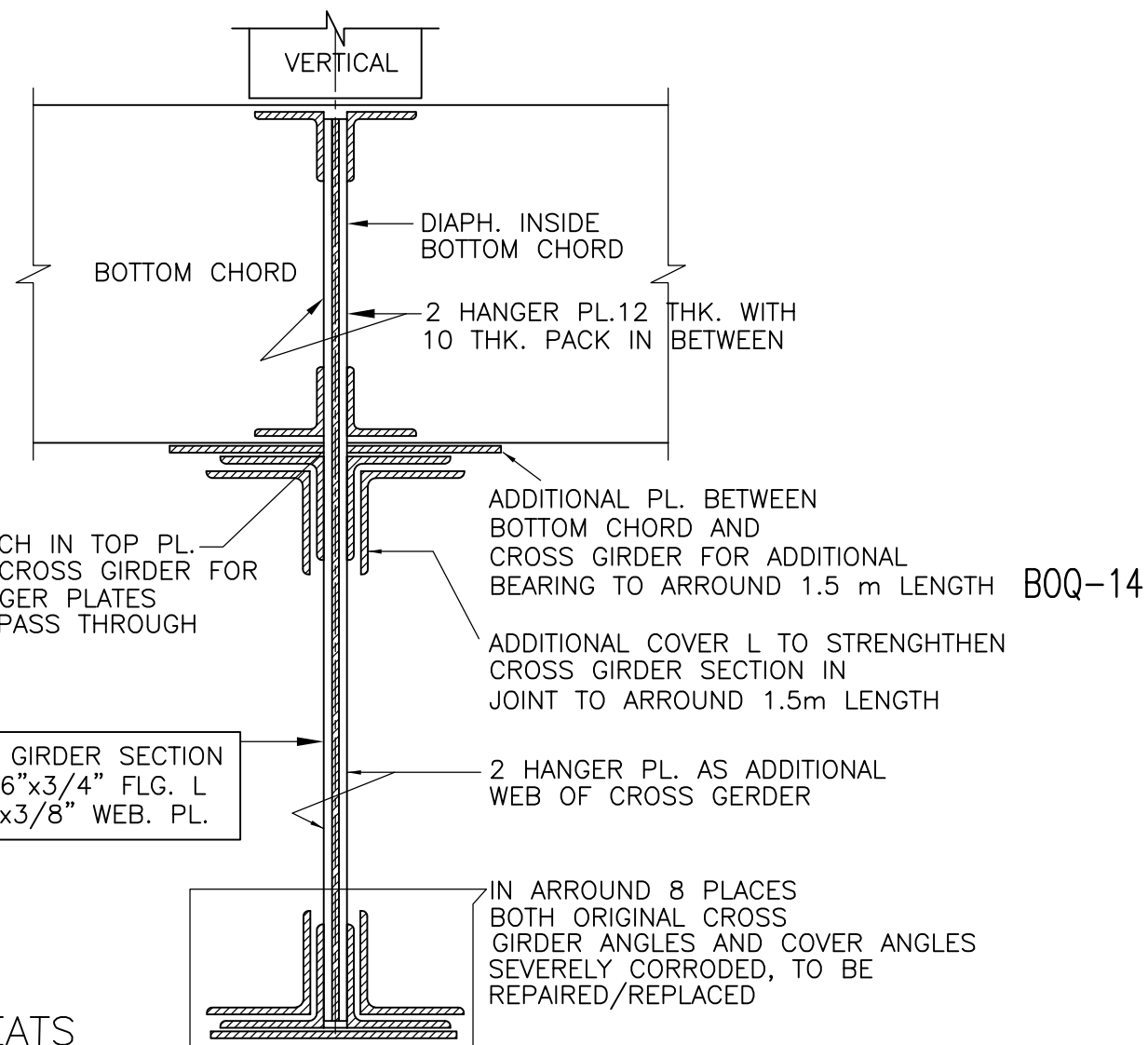
DIAPH. CONNec INSIDE BOTTOM CHORD JOINTS
LIST OF MISSING/BLANK HOLES

JOINTS	U/S	NO	D/S	JOINTS	D/S
B4	1			B7	3
B6	1			B9	2
B9	1			B11	5
B13	4	RIVET WITH WASHER		B15	4
B15	2			B16	3
B16	2			B18	1
B17	4	RIVET WITH WASHER			
B18	4	DO			



BOQ-16 ANGLE CLEAT 150x150x20 APPEARS OLD/DAMAGED/SEVERELY CORRODED, MOST OF THEM BOLTED CONNECTION, TO BE RENEWED COMPLETELY

DETAILS OF MISSING RIVETS/BOLTS IN BOTTOM CHORD DIAPH. AND BOTTOM CLEATS



CROSS GIRDER SECTION
4/6"x6"x3/4" FLG. L
1/39"x3/8" WEB. PL.

VITAL CONNECTION OF LOAD TRANSFER BETWEEN CROSS GIRDER AND BOTTOM CHORD / VERTICAL IN JOINT

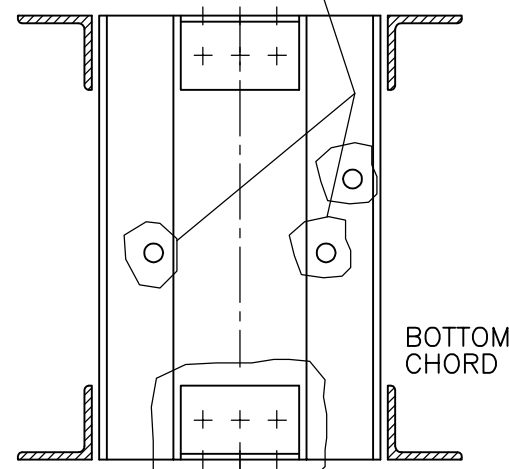
(SCALE 1:10)

FOR TENDER PURPOSE ONLY

DATE	No.	REVISION	DRAWN	CHECKED	APPROVED
REGISTERED OFFICE : STUP Consultants P. Ltd. 1004-5 RAHEJA CHAMBERS, NARIMAN POINT, BOMBAY 400 021.			OFFICE OF ORIGIN KOLKATA		
OWNER CLIENT HOOGHLY RIVER BRIDGE COMMISSIONERS			DATE 08.05.2012		
CONTRACTOR CLIENT			DRAWN SK.M.		
PROJECT REHABILITATION OF OLD KHIDDERPORE BRIDGE OVER TOLLY NALLAH IN KOLKATA			CHECKED S.RAY		
TITLE CROSS GIRDER SUPPORT			APPROVED A.D.		
DRG.NO.: 9404/T-33		REV. 0	SCALE 1:10		
THIS DRAWING IS THE PROPERTY OF STUP CONSULTANTS P. LIMITED. IT SHOULD NOT BE USED, COPIED OR REPRODUCED WITHOUT THEIR WRITTEN PERMISSION.					

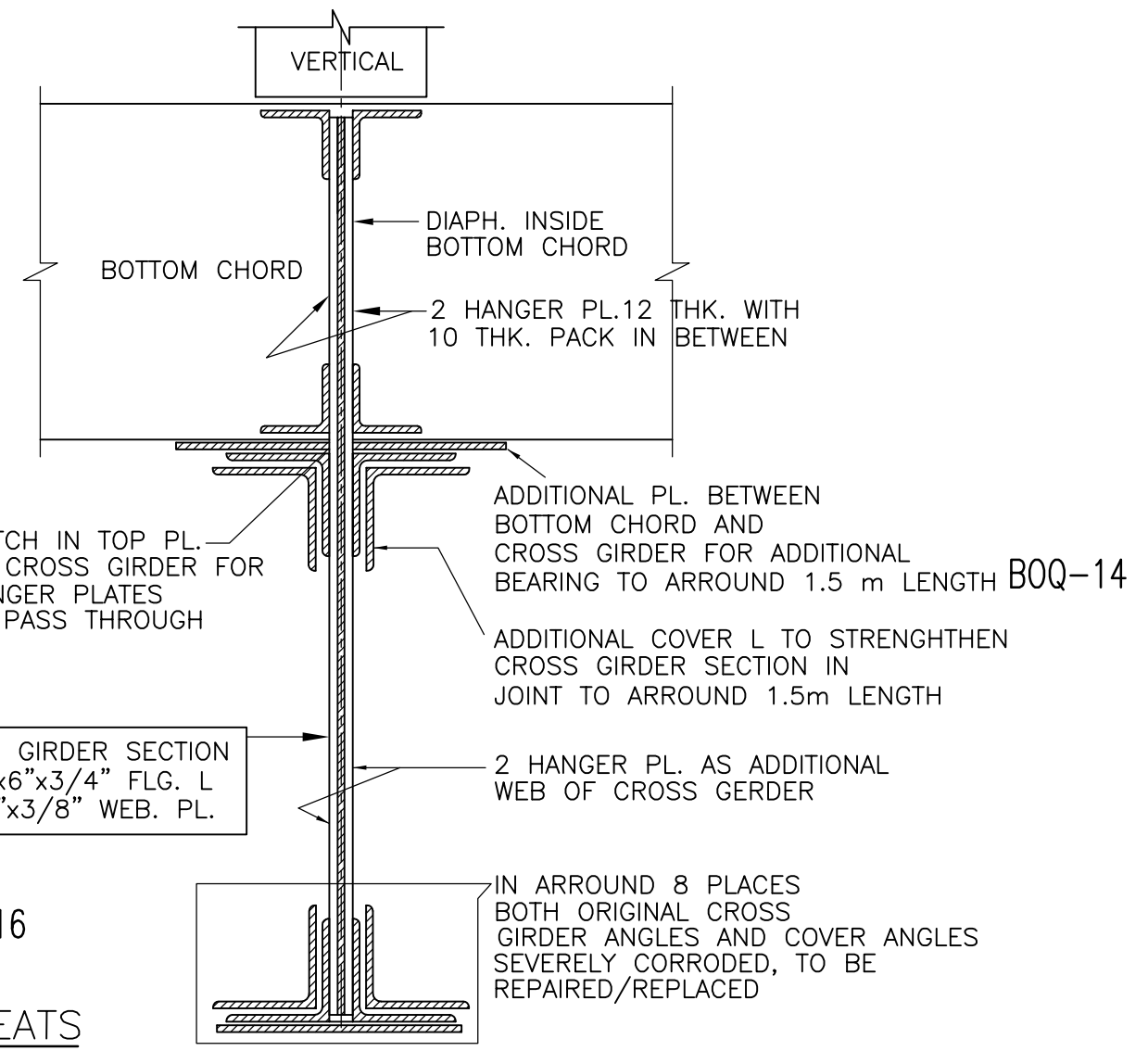
DIAPH. CONNec INSIDE BOTTOM CHORD JOINTS
LIST OF MISSING/BLANK HOLES

JOINTS	U/S	D/S JOINTS	JOINTS	D/S
B4	1 NO	B7		3
B6	1	B9		2
B9	1	B11		5
B13	4 RIVET WITH WASHER	B15		4
B15	2	B16		3
B16	2	B18		1
B17	4 RIVET WITH WASHER			
B18	4 DO			



ANGLE CLEAT 150x150x20 APPEARS OLD/DAMAGED/SEVERELY CORRODED, MOST OF THEM BOLTED CONNECTION, TO BE RENEWED COMPLETELY BOQ-16

DETAILS OF MISSING RIVETS/BOLTS IN BOTTOM CHORD DIAPH. AND BOTTOM CLEATS

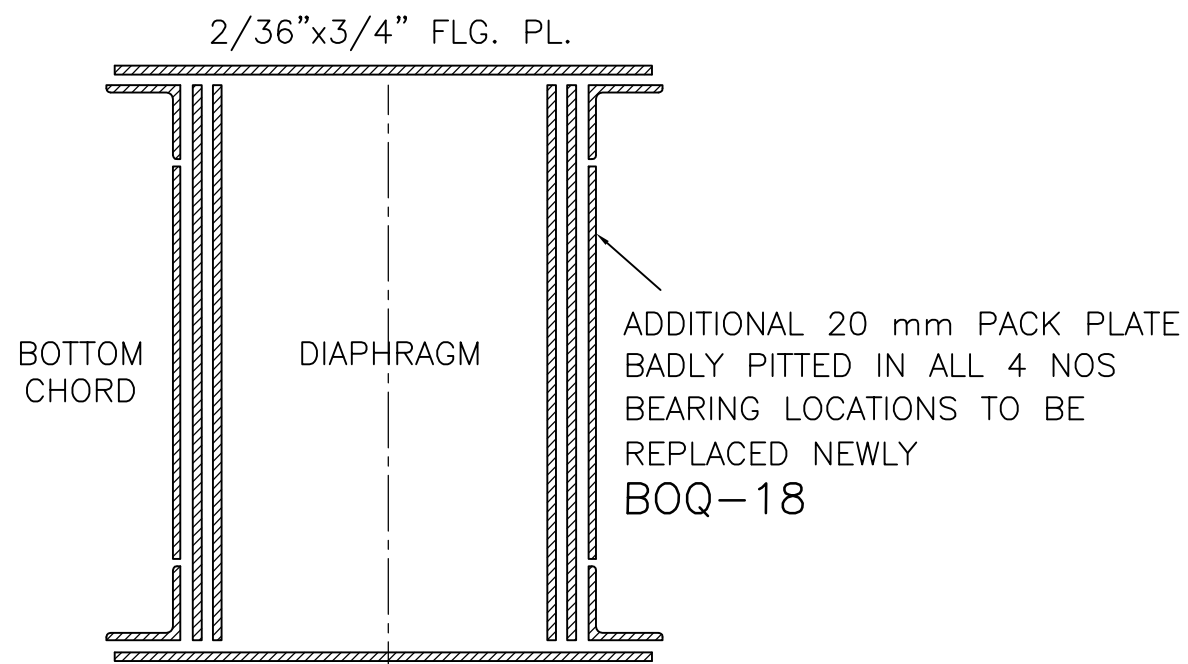


CROSS GIRDER SECTION
4/6"x6"x3/4" FLG. L
1/39"x3/8" WEB. PL.

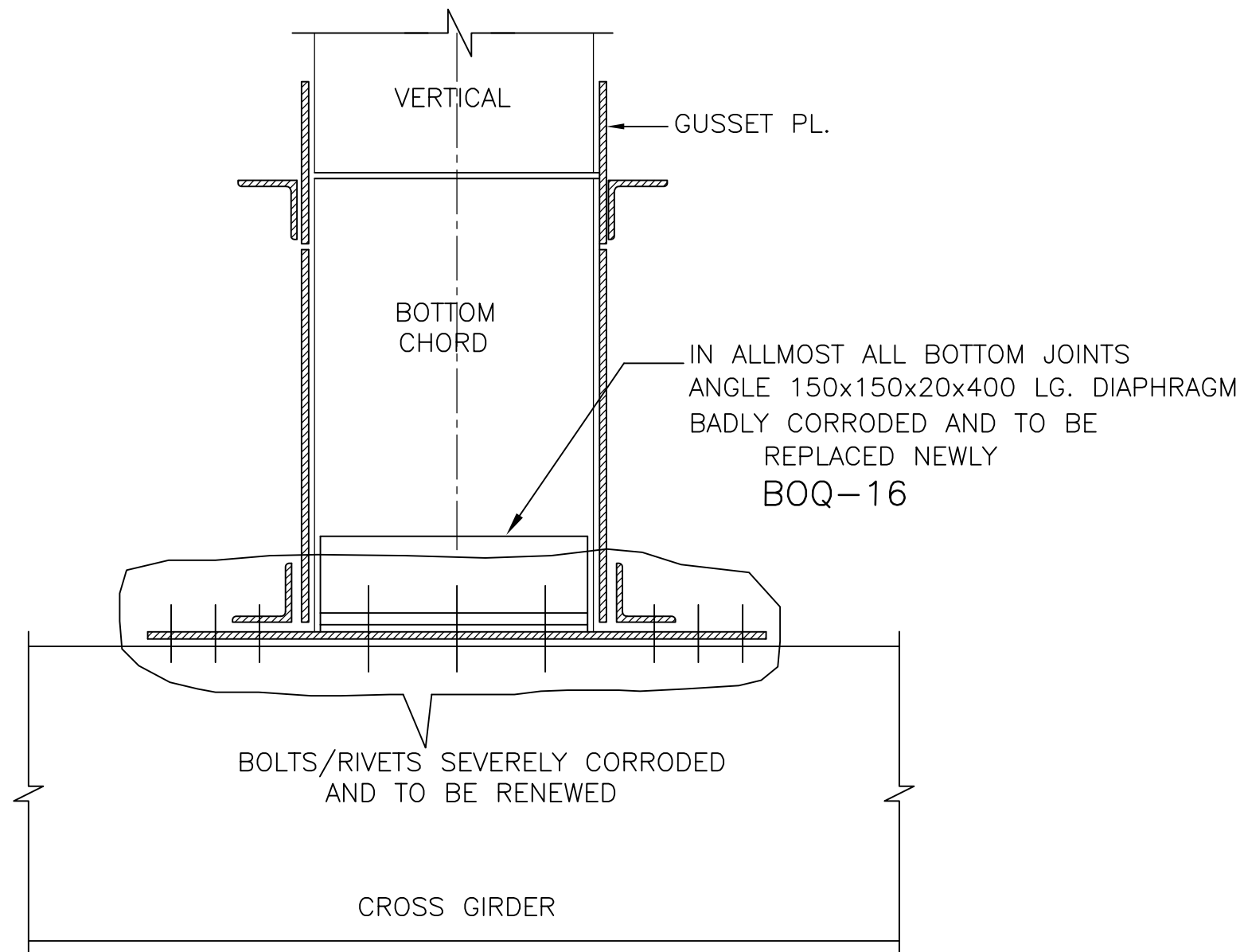
VITAL CONNECTION OF LOAD TRANSFER BETWEEN CROSS GIRDER AND BOTTOM CHORD / VERTICAL IN JOINT
(SCALE 1:10)

FOR TENDER PURPOSE ONLY

DATE	No.	REVISION	DRAWN	CHECKED	APPROVED
REGISTERED OFFICE : STUP Consultants P. Ltd. 1004-5 RAHEJA CHAMBERS, NARIMAN POINT, BOMBAY 400 021.			OFFICE OF ORIGIN KOLKATA		
OWNER CLIENT HOOGLHY RIVER BRIDGE COMMISSIONERS			DATE 08.05.2012		
CONTRACTOR CLIENT			DRAWN SK.M.		
PROJECT REHABILITATION OF OLD KHIDDERPORE BRIDGE OVER TOLLY NALLAH IN KOLKATA			CHECKED S.RAY		
TITLE CROSS GIRDER SECTION			APPROVED A.D.		
DRG.NO.: 9404/T-37		REV. 0	SCALE 1:10		
THIS DRAWING IS THE PROPERTY OF STUP CONSULTANTS P. LIMITED. IT SHOULD NOT BE USED, COPIED OR REPRODUCED WITHOUT THEIR WRITTEN PERMISSION.					



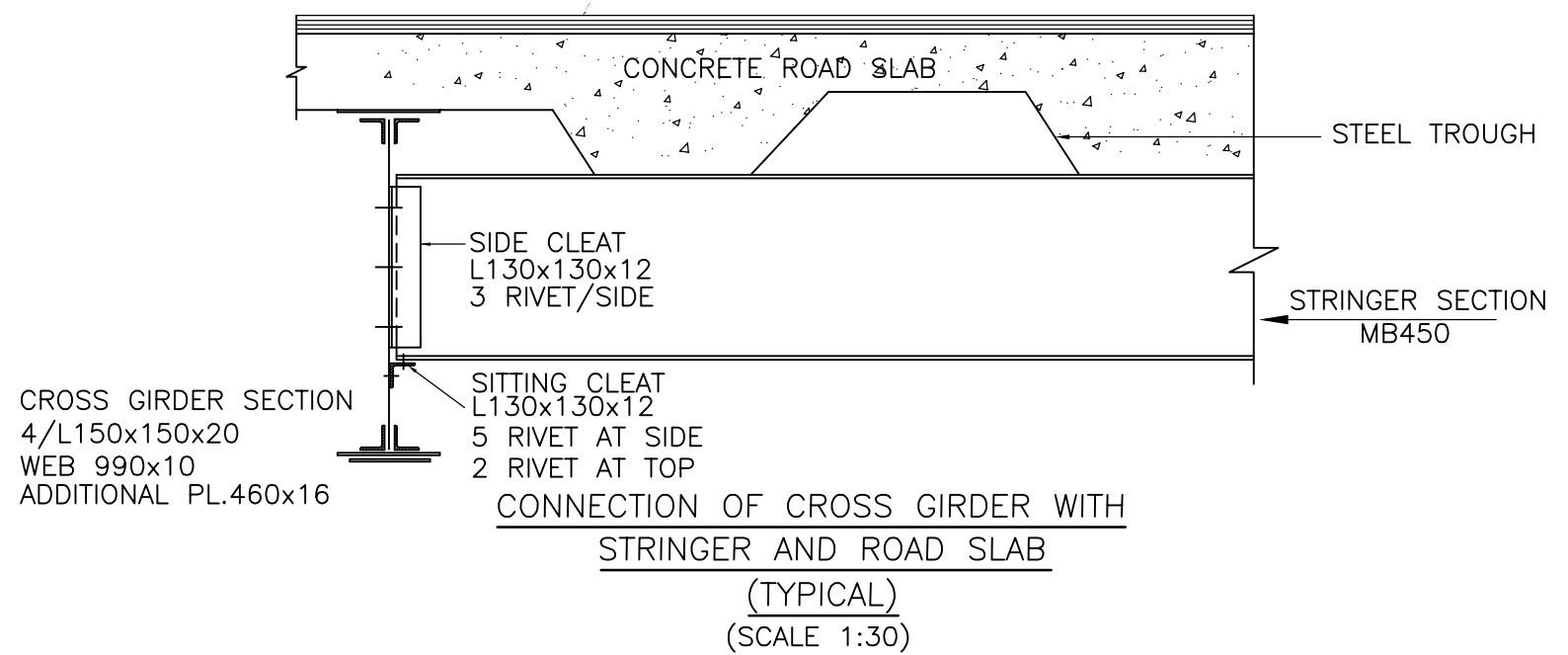
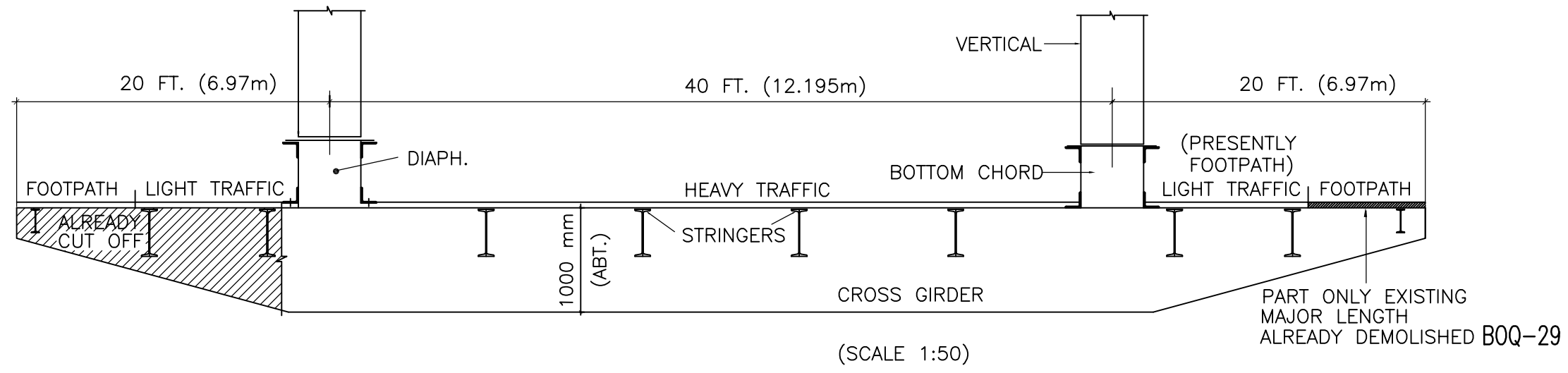
SECTION OF BOTTOM CHORD
NEAR BEARING POINTS



CONNECTION BETWEEN DIAPH. OF BOTTOM CHORD
WITH CROSS GIRDER AT NODE POINT
(SCALE 1:10)

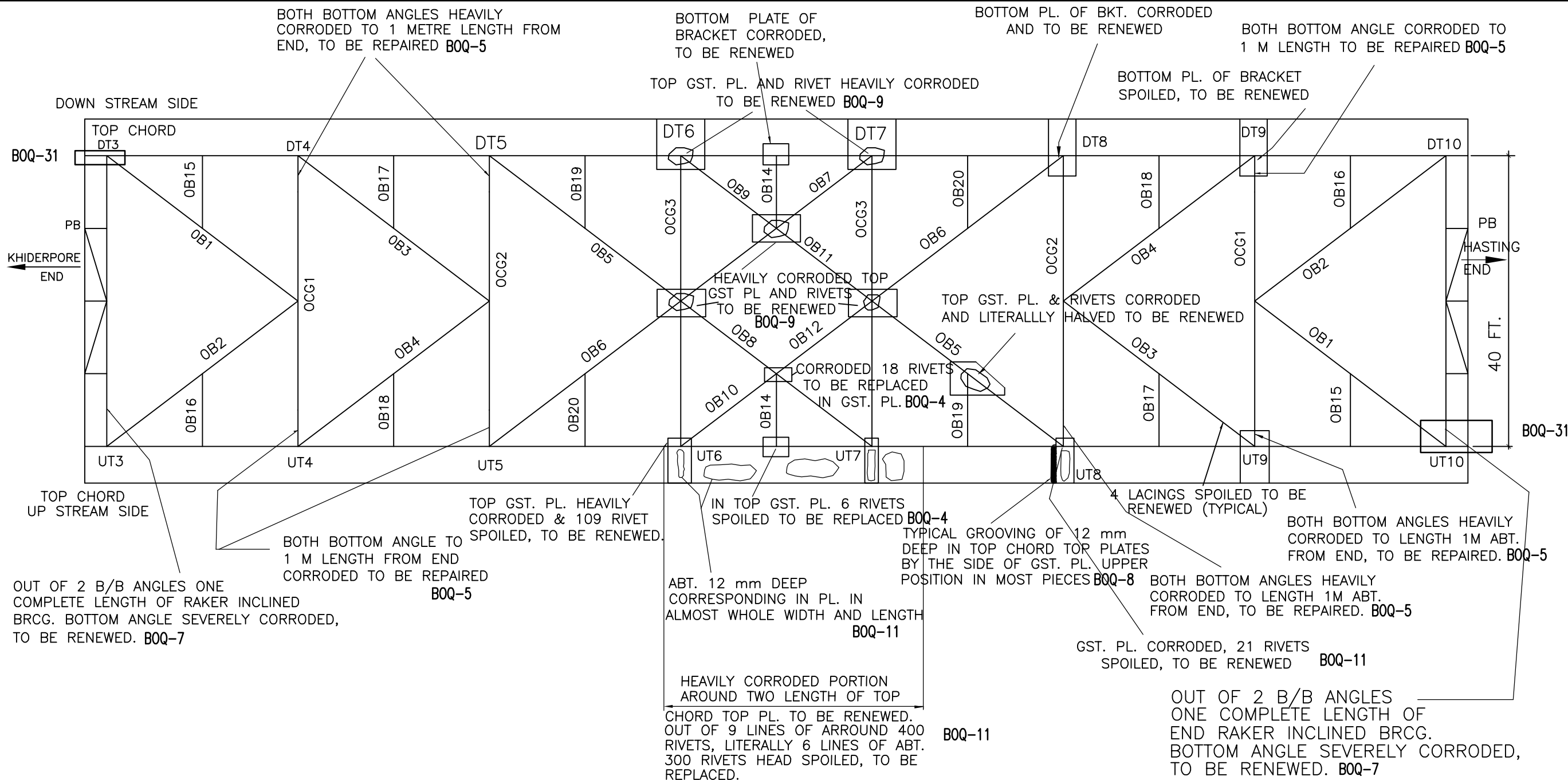
FOR TENDER PURPOSE ONLY

DATE	No.	REVISION	DRAWN	CHECKED	APPROVED
REGISTERED OFFICE : STUP Consultants P. Ltd. 1004-5 RAHEJA CHAMBERS, NARIMAN POINT. BOMBAY 400 021.			OFFICE OF ORIGIN		KOLKATA
OWNER CLIENT				DATE	
HOOGHLY RIVER BRIDGE COMMISSIONERS				08.05.2012	
CONTRACTOR CLIENT				DRAWN	
				SK.M.	
PROJECT				CHECKED	
REHABILITATION OF OLD KHIDDERPORE BRIDGE OVER TOLLY NALLAH IN KOLKATA				S.RAY	
TITLE				APPROVED	
BEARING POINT				A.D.	
DRG.NO.: 9404/T-34			REV.	SCALE	
			0	1:10	
THIS DRAWING IS THE PROPERTY OF STUP CONSULTANTS P. LIMITED. IT SHOULD NOT BE USED, COPIED OR REPRODUCED WITHOUT THEIR WRITTEN PERMISSION.					



FOR TENDER PURPOSE ONLY

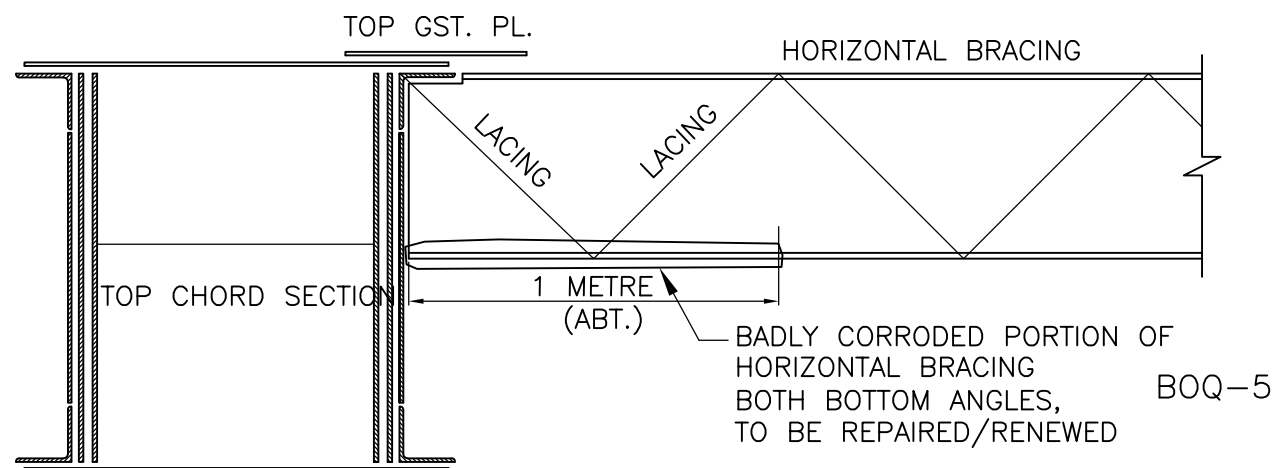
DATE	No.	REVISION	DRAWN	CHECKED	APPROVED
STUP Consultants P. Ltd.			REGISTERED OFFICE : 1004-5 RAHEJA CHAMBERS, NARIMAN POINT, BOMBAY 400 021.		
OWNER CLIENT HOOGHLY RIVER BRIDGE COMMISSIONERS			OFFICE OF ORIGIN KOLKATA		
CONTRACTOR CLIENT			DATE 08.05.2012		
PROJECT REHABILITATION OF OLD KHIDDERPORE BRIDGE OVER TOLLY NALLAH IN KOLKATA			DRAWN SK.M.		
TITLE BRIDGE SECTION			CHECKED S.RAY		
DRG.NO.: 9404/T-47			REV. 0		
SCALE 1:30			APPROVED A.D.		
THIS DRAWING IS THE PROPERTY OF STUP CONSULTANTS P. LIMITED. IT SHOULD NOT BE USED, COPIED OR REPRODUCED WITHOUT THEIR WRITTEN PERMISSION.					



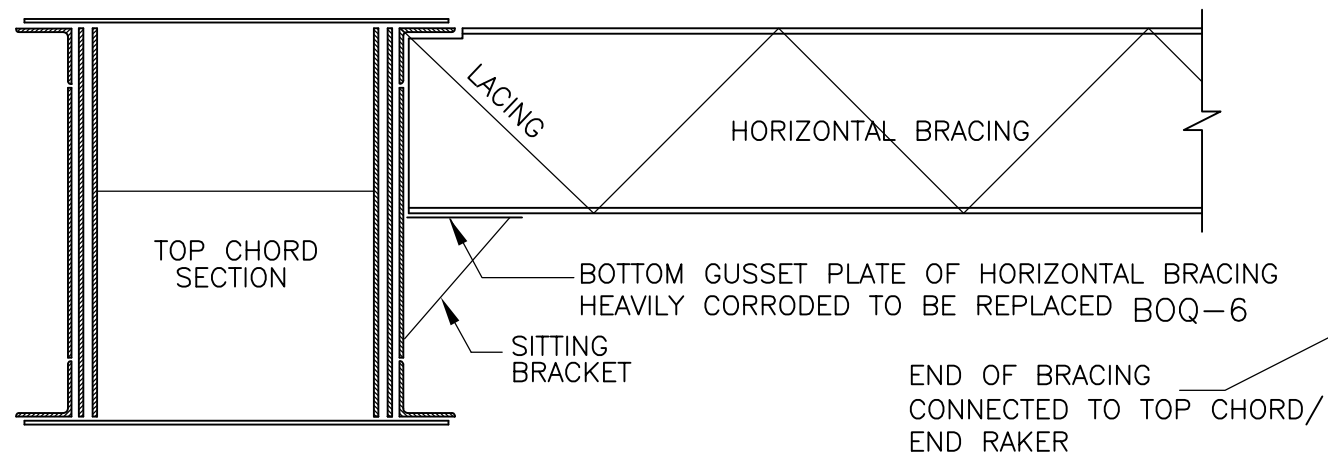
OVERHEAD BRACING OF TOP CHORD
(SCALE 1:200)

FOR TENDER PURPOSE ONLY

DATE	No.	REVISION	DRAWN	CHECKED	APPROVED	
		REGISTERED OFFICE : 1004-5 RAHEJA CHAMBERS, NARIMAN POINT, BOMBAY 400 021.				OFFICE OF ORIGIN KOLKATA
		OWNER CLIENT HOOGLY RIVER BRIDGE COMMISSIONERS				DATE 08.05.2012
		CONTRACTOR CLIENT _____				DRAWN SK.M.
		PROJECT REHABILITATION OF OLD KHIDERPORE BRIDGE OVER TOLLY NALLAH IN KOLKATA				CHECKED S.RAY
		TITLE BRACING				APPROVED A.D.
		DRG.NO.: 9404/T-52	REV. 0	SCALE 1:200		
THIS DRAWING IS THE PROPERTY OF STUP CONSULTANTS P. LIMITED. IT SHOULD NOT BE USED, COPIED OR REPRODUCED WITHOUT THEIR WRITTEN PERMISSION.						

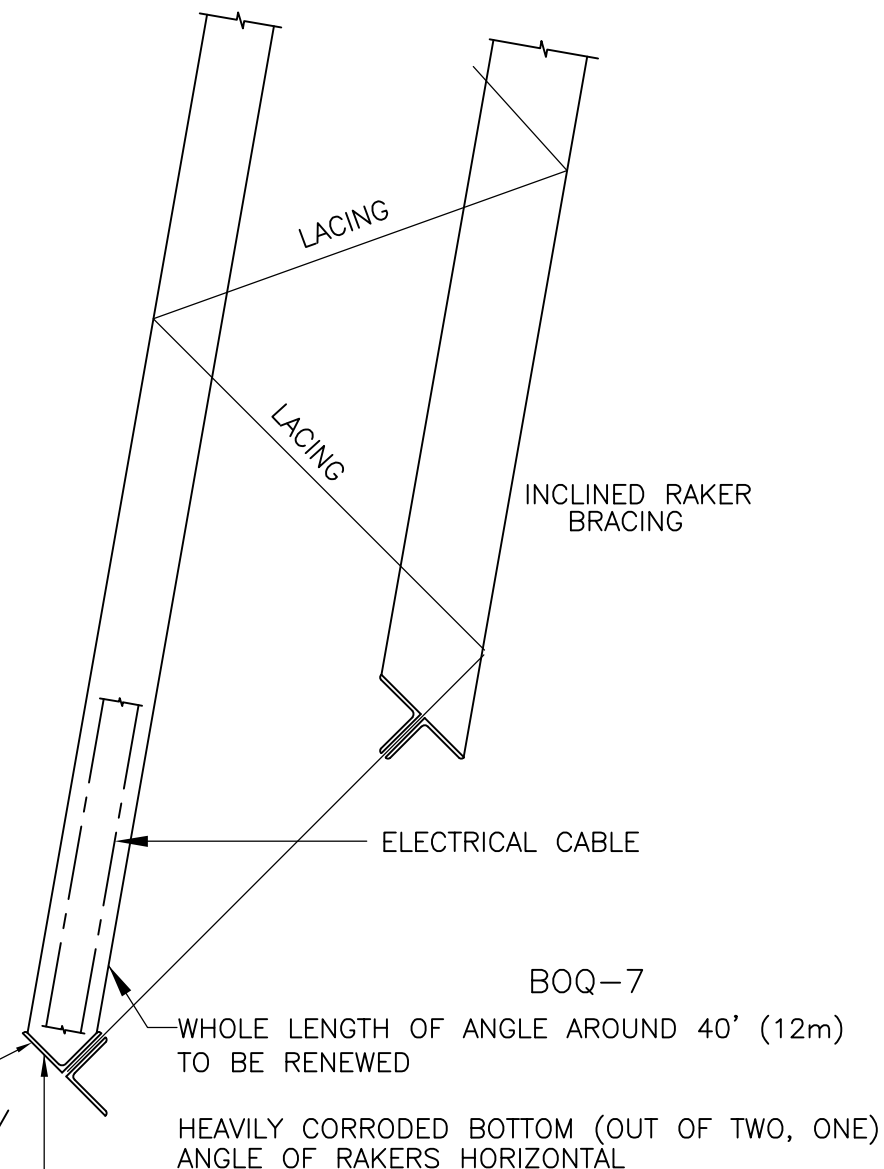


TYPICAL IN A NUMBER OF PLACES



TYPICAL OF A NUMBER OF PLACES OF TOP BRACINGS

(SCALE 1:20)



TYPICAL AT RAKER LOCATION

(BETWEEN 2 TOP CHORDS)

FOR TENDER PURPOSE ONLY

DATE	No.	REVISION	DRAWN	CHECKED	APPROVED
REGISTERED OFFICE : 1004-5 RAHEJA CHAMBERS, NARIMAN POINT, BOMBAY 400 021.			OFFICE OF ORIGIN		KOLKATA
OWNER CLIENT			HOOGHLY RIVER BRIDGE COMMISSIONERS		DATE 08.05.2012
CONTRACTOR CLIENT			_____		DRAWN SK.M.
PROJECT			REHABILITATION OF OLD KHIDDERPORE BRIDGE OVER TOLLY NALLAH IN KOLKATA		CHECKED S.RAY
TITLE			TOP BRACING		APPROVED A.D.
DRG.NO.:			9404/T-62		REV. 0
					SCALE 1:20
THIS DRAWING IS THE PROPERTY OF STUP CONSULTANTS P. LIMITED. IT SHOULD NOT BE USED, COPIED OR REPRODUCED WITHOUT THEIR WRITTEN PERMISSION.					